



INIALA

BEACH HOUSE · THAILAND



DESTINATION GUIDE

We are delighted to welcome you to Iniala Beach House.

Whilst much of the experience at Iniala is one of the beach, boating, spa and cuisine, we understand that sometimes you have to get out there and explore this beautiful land.

Inside this destination guide you will find a trove of information pertaining to various activities and offerings available within the Phuket and Phang Nga area.

We designed this directory to offer recommendations based upon tried and true experiences favoured by some of our most regular guests and showcasing the very best of the surrounding area and what Iniala has to offer.

Please do not hesitate to contact us if we can assist in anyway.

Enjoy your stay.

The Iniala Family

CONTENTS

ACTIVITIES & SPORT

ANIMAL INTERACTIONS.....	05
FAMILY FUN.....	06
WET WEATHER ACTIVITIES.....	08
HIKING AND TREKKING.....	10
ADVENTURE.....	11
SPORT.....	12
CULTURE.....	13
WATERSPORTS.....	16

SHOPPING

MARKETS.....	20
RETAIL THERAPY.....	22

GOLF

GOLF COURSES.....	24
-------------------	----

BOAT TRIP

ISLAND & ITINERARY	27
--------------------------	----

RESTAURANT

THAI & LOCAL FLAVOURS.....	34
WESTERN & INTERNATIONAL.....	37
BEACH CLUBS & BARS.....	40

INIALA AMENITIES

INIALA STUDIO / INIALA SPA.....	43
GYM.....	44
INSPIRASIA.....	45



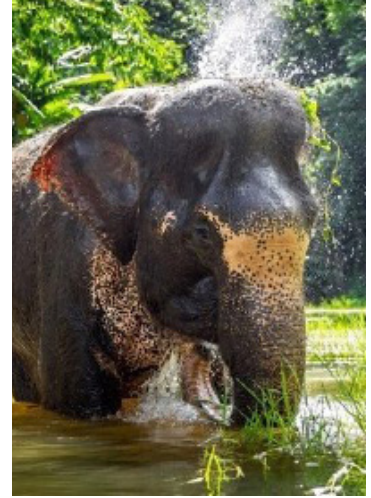
ACTIVITIES & SPORT

ANIMAL INTERACTIONS

PHUKET ELEPHANT SANCTUARY

Enjoy a morning, afternoon or full day with the elephants at Phuket Elephant Sanctuary, where you will meet the animals, learn who they are and why they need to be protected. PES offers guests the opportunity to feed and enjoy a leisurely walk with the elephants, observing them as they go about their day' roaming, foraging, playing with each other, bathing and enjoying a mud bath in one of the three huge lagoons. National Geographic mentions this as the most ethical place in southern Thailand to observe elephants.

ADULT:	3,500 THB
CHILD (3-10 YEARS):	1,750 THB
DAILY TOUR:	09:30 AM – 1:00PM / 1:30-5:00 PM
AREA:	PAK KLOK – 45 MINS FROM INIALA
PRIVATE TRIP	
ADULT:	5,500 THB
CHILD (4-12 YEARS):	2750 TH



GIBBON REHABILITATION PROJECT

This organisation aims to protect gibbons and their habitat through rehabilitation and education. The project takes in gibbons who have been rescued, taken away from their 'owners' or have been handed in by owners who no longer wish to look after them. The gibbons then go through a long rehabilitation process to acclimatise them back to the wild before they are released back into their natural forest habitat.

ADMISSION:	1 hrs. Learning gibbon rehabilitation for 3 pax 2500 THB 2 hrs. Save gibbon ave forests for 4000THB / pax
PRIVATE TRIP	1 hrs. /10,000 THB. 2 hrs. /30,000 THB
PRICE:	200 THB PER PERSON (NATIONAL PARK ENTRANCE FEE)
DAILY:	09:30AM – 3:00PM
AREA:	PAK KLOK - 45 MINS FROM INIALA



HORSE RIDING

Horse riding is a fun way to explore Phuket's natural scenery especially when you're riding along the shoreline of Mai Khao Beach at sunset. Gentle horses are available for beginners and experienced riders. Trained guides will accompany you to provide instruction and ensure your ride is safe at every turn.

PRICE:	1 HOUR - 1,200 THB 1.5 HOURS - 1,700 THB 2 HOURS - 2,200 THB
DAILY:	09:00AM – 6:00PM
AREA:	MAI KHAO BEACH / 20 MINS FROM INIALA



FAMILY FUN

BLUE TREE

A 56-Acres multi-faceted entertainment destination located in Chergntalay, Phuket. In the heart of the tourism district, across from the Central West Coast beaches. Slip N Fly, Cliff Diving, Rock Climbing, Zorb Football, Standup Paddleboard, Ninja Warrior obstacle course and dozens of other activities provided by the Activities Team including a giant lagoon, beach club, waterdslides, fitness center, restaurant and retail outlets

ADULT (over 120 cm): 1,000 THB - Full access to facilities
CHILD (90-119 cm): 350 THB
 FREE ENTRANCE FOR KIDS UNDER 90 CM
DAILY: 10:00AM – 7:00PM
AREA: CHERNG TALAY
 45 MIN FROM INIALA



SPLASH JUNGLE

This waterpark has thrilling rides such as the 'Boomerang' and the 'Super Bowl' as well as a large wave pool and aqua-play pool for the little ones. If the exhilarating slides are not for you then why not idly float down the 335-meter lazy river or treat yourself to some hydrotherapy in the spring pool.

ADULT: 750 THB
CHILD: 500 THB (5-12 YEARS OLD)
DAILY: 10:00AM – 5:45PM
AREA: MAI KHAO
 20 MINS FROM INIALA



ANDAMANDA PHUKET

Gate to the magnificent gem of the ocean where mystic legends lie await Your discovery. Enjoy a splashing time and immerse yourself in Thai Mythology In Andamanda Phuket a Thai heritage-themed waterpark embraces the local Thai culture. Brings you the quest for hidden treasures from the Andaman Sea. Among the many kingdoms which is about 100,000 square meters, is undoubtedly the best place to come.

ADULT: 1,500 THB
CHILD: 1,000 THB
DAILY: 10:00AM – 7:00PM
AREA: KATHU
 75 MINS FROM INIALA



FAMILY FUN

MINI GOLF

Phuket Adventure Golf is a mix between mini golf and long golf, played on artificial grass with a putter and ball. The spectacular and exciting 18-hole course takes about one and half hours to play. The course is suitable for those who have never held a golf club but also challenging enough for those who play full size courses.

ADULT: 500 THB
CHILD: 300 THB (4-11 YEARS OLD)
DAILY: 11:00AM – 11:00PM
AREA: BANGTAO BEACH
 1 HOUR FROM INIALA



MUD SPA (KHOK KHAI)

Hot mud spa, hot sand beach and hot salt water. The only place in Thailand, or what the locals “Hot Springs Beach”, is located in Khong Marui Subdistrict, Thap Put District, Phang Nga Province.

Phang Nga and Krabi Provinces which the villagers in the area use to treat beriberi aches, and the Ban Khok Krai Community Tourism Group Organize a nature trip under the name “ Hot Mud Spa, Hot Sand Beach and Hot Saltwater” which activities consist of taking a boat ride to see the nature in the morning. Reaching the hot sandy beach

There will be a walk on the sand at a good hot temperature, followed by soaking in hot water in the desired hot mud spa for 10 minutes in order to open the pores before going to wash cold water about 1 meter deep from the mud, which is hot mud with a deep black color and a good temperature. Apply to the body at the desired point, then sit or lie down for 15 minutes and get a drink along with local snacks, then wash off the mud with water in the canal after completing the activity will feel refreshed and relaxed. Your skin will become softer and smoother

DAILY: 08:00AM-04:00PM
 OPEN ONLY 10 DAYS PER MONTH
 (PLEASE CHECK BEFORE BOOKING)

ADULT (1-3 PAX): 2500 THB/ PERSON
ADULT (4 PAX): 2000 THB/ PERSON
CHILD (1-4 YEARS OLD): FREE
CHILD (5-11 YEARS OLD): 1250 THB/ PERSON

AREA: KLOK KHAI (TUB PUD, PHANG NGA)
 60 MIN FROM INIALA



WET WEATHER ACTIVITIES

AQUARIA

Opened in late 2019, Aquaria is Thailand's largest aquarium. A magical underwater journey that takes you through the wonders of the ocean and the mysteries of the rivers with around 300 species and 25,000 marine animal. The aquarium also includes a 3D trick eye museum, mermaids and as underwater fine dining restaurant called Andasi

DAILY:	10:30AM – 8:00PM
ADULT:	940 THB
CHILD (3-11 YRS):	490 THB
AREA:	CENTRAL FORESTA, PHUKET TOWN 75 MIN FROM INIALA



TURTLE SANCTUARY

A sea turtles conservation center nestled on the Ao Dong tan shores, Royal Thai Navy

Third Fleet Turtle Nursery is the ideal place to see turtles in their varying stages of development.

The nursery makes for an informative visit with tours that provide visitors with insights on turtle behavior and breeding. With an aim to conserve the sea and sick turtles, the nursery makes for an interesting place to visit with kits in Khao Lak.

DAILY:	06:00AM – 4:00PM
ADULT:	60 THB
AREA:	ROYAL THAI NAVY KHAO LAK 45MIN FROM INIALA

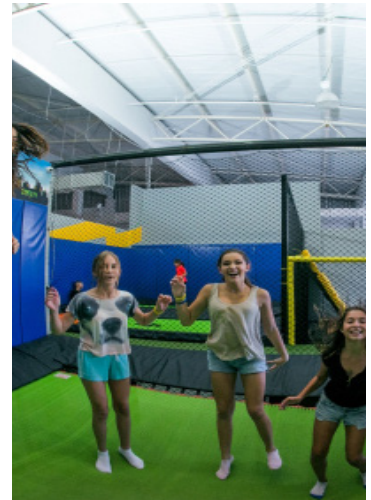


WET WEATHER ACTIVITIES

50 FLY TRAMPOLINE CLUB

The first extreme trampoline centre in Phuket! Offering international standard and supersized trampolines with reinforced springs, specially built foam pits, professional crash mats and soft wall coverings, you will jump higher and safer than ever before with assistance from the expert coaches. Open sessions are available to all ages throughout the day and it can be a great way to work up an appetite before heading to Central Festival Shopping Mall.

PRICE:	START 350 THB PER HOUR (MON-FRI) * 60 THB - SOCK
DAILY:	11:00AM – 8:00PM (TUESDAY-FRIDAY) 10:00AM- 8:00PM (SATURDAY-SUNDAY) 06:00PM – 8:00PM 250 THB /HOUR
CLOSE:	EVERY MONDAY
AREA:	BIG C PHUKET (2nd FLOOR) 75 MIN FROM INIALA



BAAN TEELANKA – UPSIDE DOWN HOUSE

Located on the northern outskirts of Phuket Town, Baan Teelanka features no less than three exciting attractions to entertain the whole family. Baan Teelanka itself is a three-storey house built upside down on its roof. It is adorned with a maze-shaped garden in it's backyard and a 'Chamber of Secrets' where guests must escape from two rooms by finding clues and solving the puzzle to open their doors.

UPSIDE DOWN HOUSE:	ADULT 430 THB / CHILD 190 THB
AMAZE MAZE:	ADULT 230 THB / CHILD 120 THB
DAILY:	10:00AM – 5:00PM
AREA:	BYPASS ROAD 1 HOUR FROM INIALA

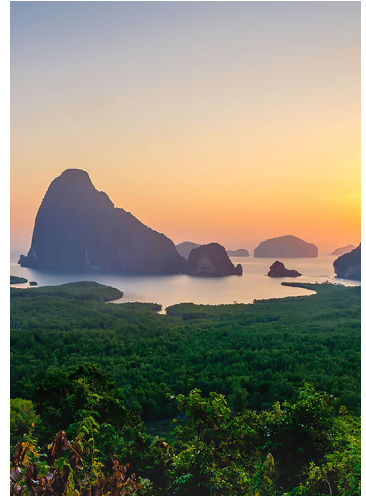


HIKING AND TREKKING

SAMET NANGSHE VIEWPOINT

Just a short journey from Iniala lays one of the most spectacular views in Thailand which is fast becoming popular with natives on their pilgrimage to capture the most stunning sunrise view. The view of the limestone mountain rising from the sea is equally enjoyable throughout the day with a refreshing beverage at the summit of Samet Nangshe Boutique's cafe

PRICE:	VIEW POINT ACCESS 150 THB / PERSON AND COMBO
DAILY:	05:00AM – 6:00PM
AREA:	SAMET NANGSHE, PHANG NGA 35 MIN FROM INIALA



ADVENTURE

ZIPLINE (FLYING HANUMAN)

Flying hanuman is a zip line adventure like no other on Phuket. It shows that the island's beauty goes far beyond the sea, sun, and sand that it is famous for. The hillsides of Phuket overflow with thick forest that is great for exploration and outdoor activities.

PRICE:	Program A	3,490 THB
	Program B	2,990 THB
	Program C	2,490 THB
DAILY:	08:00AM – 3:00PM	
AREA:	KATHU	
	90MIN FROM INIALA	



SHOOTING RANGE

There's a good choice of handguns or rifles of different calibre's: .22, .38, .45, 9mm and shotguns. The instructors are extremely professional and stringent rules are in place to ensure perfect safety for visitors and shooters alike. Set prices include a target, bullets, gun, instructor and insurance.

PRICE:	Range from 760 THB to 1,190 THB for 10 bullets	
DAILY:	10:00 AM – 6:00PM	
AREA:	SARASIN	
	5 MINS FROM INIALA	



GO-KARTING

The Patong Go-Kart Speedway is a fun and rip-roaring activity for the whole family. The 750m long race track has a series of sharp curves, smooth bends and a long straight over the start/finish lane allowing for serious acceleration. There are four types of kart available ranging from 140cc for kids up to 400cc for those aspiring Formula One drivers.

PRICE:	ON REQUEST (STARTING FROM THE HIGH 130 CM UP, AGE NO LIMIT DEPEND ON EXPERIENCE)	
DAILY:	10:00AM – 6:30PM	
AREA:	KATHU	
	1.5 HOURS FROM INIALA	



SPORTS

PADEL

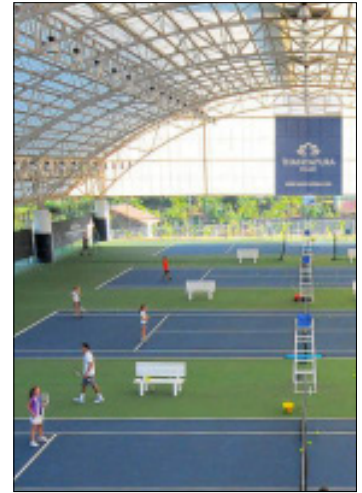
We have 3 outdoor Padel Tennis Courts. Our goal is to grow the community of this sport that mixes high energy fun and the best social atmosphere. We are localtee between Chalong and Rawai on the Patak road leading to Kata beach.

PRICE: 1,500 PER HOURS
DAILY: 07:00AM – 11:00PM
AREA: CHALONG
 2HOURS FROM INIALA



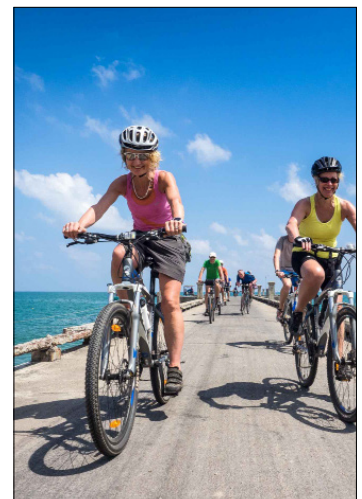
TENNIS

There's nothing better than a game of tennis to work off those holiday indulgences. Partner for a game on world-class indoor and outdoor Plexicushion courts, or beginners and children can brush up on their skills with expert instruction at the Tennis Academy. Whilst we don't currently have tennis courts on site, we would be very happy to arrange a booking for you at Thanyapura Health Club – voted the best Tennis Club in Asia and located approximately 30 minutes south of Iniala.



CYCLING

We have 8 carbon frame mountain bikes available at all times for guests of Iniala Beach House and Iniala Shores. Please contact your Villa Manager about booking one or alternatively, speak with our Activities team about a guide tour to visit some unique local attractions.



CULTURE

SIMON CABARET

Thailand's world famous and flamboyant lady-boys are strikingly attractive and difficult to differentiate from beauty pageant queens. At Simon Cabaret see them dressed up in dazzling costumes as they dance around elaborate stage sets while lip-synching international hits.

PRICE: VIP 1,000 THB
DAILY SHOWS: 7:30PM AND 9:00PM
AREA: PATONG
 1.5 HOURS FROM INIALA



AUTHENTIC THAI BOXING SHOW

Experience the national sport of Thailand at the island's most famous boxing stadium centrally located in Patong. The stadium attracts fighters from all over the world to compete in this ancient Thai martial art. The fast-paced fighting can be an exhilarating experience for the first-time viewer with many amazing feats of athleticism from the fighters.

PRICE: 1,600 THB
VIP SEAT: 2,000 THB
SHOWS: WEDNESDAY, FRIDAY AND SUNDAY
 AT 9:00PM
AREA: PATONG
 1.5 HOURS FROM INIALA



CULTURE

PHUKET FANTASEA

Visit World's first Thai Cultural Theme Park - Phuket Fantasea and have a jolly good time as you immerse yourself in this park that recreates the original Thai fair. The Palace of the Elephants theatre is the centrepiece of this park, a stunning recreation of the Thai Palace. At the Palace of Elephants, witness mesmerising show productions that showcase and celebrate Thai myths and culture with cutting-edge technology and special effects. Enjoy your time at the Thai fair, which has a variety of Thai cultural shopping options lined up. Tempt your taste buds with the mouth-watering Thai cuisine at the buffet.

PRICE: SHOW ONLY 2,150 THB
SHOWS: TUESDAY, FRIDAY & SUNDAY
 AT 9:00 PM
AREA:: KAMALA
 1.5 HOURS FROM INIALA



CARNIVAL MAGIC

Carnival Magic, is the brand new night-time theme park and entertainment in Phuket and it's located next to Phuket Fantasea. The park is featuring Thai cultural carnival-style attractions including games, street performances, rides, and parade. Also, you will be able to see the world's first and largest indoor river parade at the River Palace Palladium. Then, walking through a stunning Kingdom of Light with over 40 million lights reflecting the dazzling glory of a land filled with abundance and beauty.

PRICE: PARK ADMISSION 2,100 THB
 ROYAL SEAT 350 THB
SHOWS: TUESDAY, FRIDAY & SUNDAY
 AT 9:00PM
AREA: KAMALA
 1.5 HOURS FROM INIALA



CULTURE

BUDDHIST BLESSING

Depart early in the morning to visit the ornate Tha Chai Temple and experience a blessing from by a Buddhist monk. We will prepare food from the market for you to offer as a donation to the monks as a means of merit making. The monks will pray and bless you in return. Alternatively, you can visit the temple any time during the day to explore this unique, wooden place of worship.

PRICE: 3,000 THB PER CAR
AREA: THAI MUEANG
15 MINS FROM INIALA



THAI COOKING CLASS

Walk through Thai cuisine's infinite ingredients while learning about the history and most common uses for herbs, spices, oils, rice, pastes and vegetables with one of our Thai Master Chefs.

PRICE: 3,500 THB PER PERSON
DAILY: (ADVANCE BOOKING REQUIRED)

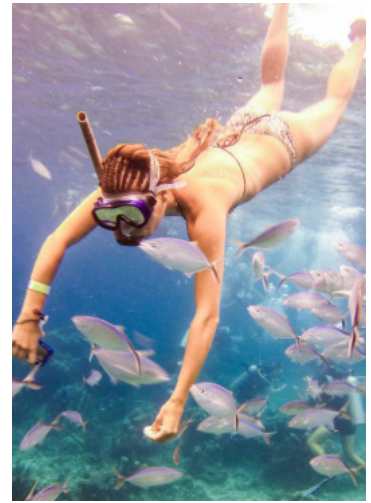


WATERSPORTS

SCUBA DIVING & SNORKELING

Float among an abundance of weird and wonderful rainbow coloured fish and thriving coral reefs as you snorkel in the calm blue waters or scuba dive to the ocean below. Explore some of the world's best dive destinations and swim with turtles, or get up close to a giant whale shark feeding away.

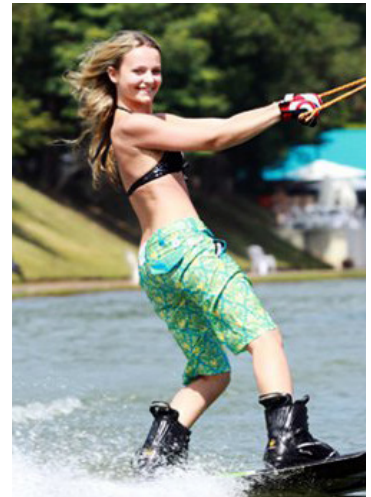
Ask your Villa Manager about joining a local dive company for a day under the water. During the diving season (Dec-April), they offer daily dive trips for certified divers, introductory divers, PADI courses, snorkel trips and diving for kids (above 8 years old).



INTERNATIONAL WAKE PARK

Located in the Mai Khao area and only 10 minutes from the airport, International Wake Park offers far more than just wakeboarding. Surrounded with stunning scenery and natural mangroves, IWP also offers two swimming pools with a steam room and a bar counter overlooking the lake so you won't miss any of the action whilst relaxing. Play pool at the bar, enjoy a delicious meal at the restaurant, stand up paddle boarding and kayaking around the lake – There is enough to keep the whole family entertained.

ADULT:	800 THB
CHILD:	600 THB (5-12 YEARS)
DAILY:	09:00AM – 9:00PM
AREA:	MAI KHAO 20 MINS FROM INIALA



SPORT FISHING

Battle giants of the deep as you hook a monster fish in the waters off Phuket. Teeming with a variety of large fish - including tuna, barracuda, and dorado – reel in your fresh catch and release back into the wild or feast on the freshest sashimi. Fishing excursions to nearby islands can combine with snorkelling scuba diving.

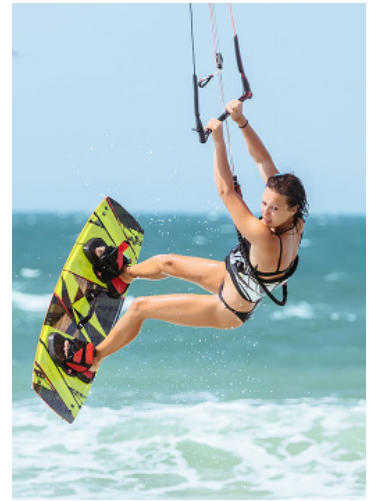


WATERSPORTS

KITE SURFING

Combining the thrills of water and air, kite surfing is fast gaining in popularity in Thailand. From May to November the northwest waters off Nai Yang provide a convenient base to learn this extreme sport, while the more experienced can show off their acrobatics. From November to May the winds move to the southeast with classes conducted at Chalong Bay.

1 DAY COURSE:	4,000 THB
PRIVATE LESSON:	8,000 THB
EQUIPMENT RENTAL:	1 HRS 1,500 THB
	1 DAY 4,000
	SUBJECT TO WEATHER CONDITIONS
AREA:	NAI YANG
	25 MINS FROM INIALA



SURFING

Wax on and catch an awesome tube! Between April and October the waters around Phuket offer some of the best wave conditions for surfing in Thailand. Novices and kids can learn with friendly instructors while experienced surfers will enjoy the breaks on Bang Tao Beach.

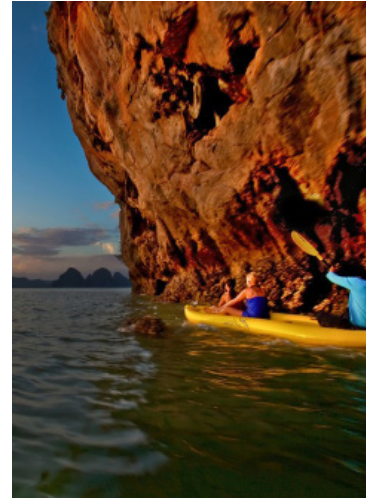
WATERSPORTS

JOHN GRAY SEA CANOE – HONG BY STARLIGHT TOUR

Great nature and wildlife surrounds you as a professional guide paddles you and your partner through sea caves and into hidden lagoons within Phang Nga Bay's marine limestone karstic islands. Keep an eye out as the hidden cliff-lined lagoons are populated with macaques, water monitors, kingfishers, mudskippers, sea eagles and brahminy kites.

After dark, you will have the option to enter the cave at night and experience a traditional 'Loy Kratong' ceremony accompanied by the magical bio-luminescent plankton lighting up the water like a starry sky.

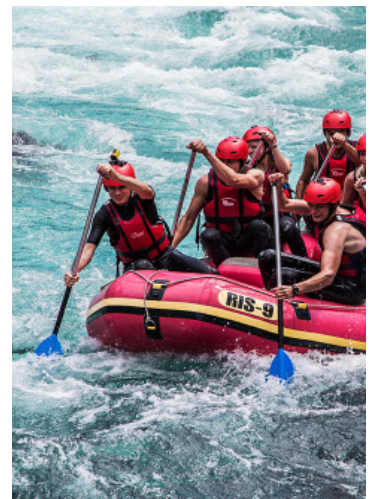
PRICE:	3,950 THB PER PERSON
DAILY TRIP:	12:00pm – 9:00pm
INCLUDES:	All equipment and guide, lunch & dinner, soft drinks & national park entrance fee
AREA:	AO POR PIER 1 HOUR FROM INIALA



RAFTING

An exhilarating rafting excursion that challenges the brave at heart. Classified as a class IV river (class III being the easiest), the trip starts takes around 30-45 minuted (60-75 minutes) in ideal water conditions) and takes on rapids down a gentle gradient towards the coast and stopping at Wat Suwannakuha (known as the temple cave and the monkey cave) along the way. The excursion includes refreshments, snacks and lunch, transfers in an Iniala car and insurance. The excursion takes approximately half a day.

ADULT:	2,800 THB
CHILD:	2,400 THB
DAILY TOUR:	09:30 AM
AREA:	PHANG NGA 1.5 HOUR FROM INIALA





SHOPPING

MARKETS

LOCAL MARKETS

Get a glimpse of the real Thailand in one of the local markets, set everyday in a different location around the local Khok Kloi area. Browse through the numerous food, vegetable and fruit stalls (although be warned – it can be quite spicy).



BOAT AVENUE WEEKEND MARKET

In addition to the permanent shopping opportunities in Boat Avenue, a 'Fun Friday Market' is held in the parking area every week. Here you can find a variety of goods including souvenirs, whilst sampling some delicious local Thai local food, all the while listening to live music.

DAILY: EVERY FRIDAY FROM 4:00PM.
AREA: LAGUNA
 45 MINS FROM INIALA



NAKA WEEKEND MARKET

This is the largest of all the night markets on the island and it's probably easier to list what you can't find here than what you can. Finding something original and unique, may take a little searching but if it's knock-down prices you're looking for and fun souvenirs – this is the place.

DAILY: SATURDAYS AND SUNDAYS FROM 4:00PM
AREA: PHUKET TOWN
 1 HOUR FROM INIALA



MARKETS

WALKING STREET MARKET

Set in a picturesque part of Phuket Old Town, Walking Street is as much a cultural attraction as the market itself. The Sino-Portuguese houses, which line the 350m road, get lit up in vibrant colours while the space between them becomes a cornucopia of traditional local foods, Thai handicrafts and lots of other little trinkets. You'll also find buskers and street performers offering entertaining distractions from your retail therapy.

DAILY: EVERY SUNDAY FROM 4:00PM
 AREA: PHUKET TOWN
 1 HOUR FROM INIALA



PATONG NIGHT MARKET

This market is particularly popular for its food stands, of which there are a great many. The tastes are great and the prices are low. So many cookers in such close proximity can make it a little warm but it's all part of the hawker / dining experience. The market is fairly small but the quality is generally good and, in some cases, the goods quite rare.



RETAIL THERAPY

BOUTIQUES & DESIGNERS

- Lola
- Wings by Hejselbjerg
- Island Bliss
- Paul Ropp
- Jim Thompson
- Tryst Beach
- Melisanaa
- Dalaya Boutique

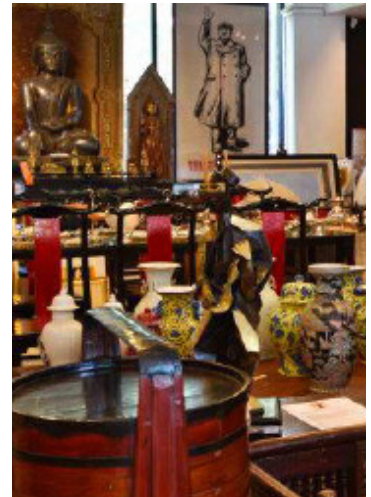
Located about 45 minutes south of Iniala, there are many independent boutiques around the Laguna area. Whether you're looking for chic resort wear or the finest handmade silk, we can tailor an itinerary to provide all your retail therapy requirements.



ANTIQUES & INTERIORS

- Oriental Fine Art
- Lamont
- Soul of Asia
- Zee Zee
- Fe2 Decor
- Ceramics of Phuket
- Siam Art
- Oriental Living

Surin Beach, Phuket has a range of large antique and art stores located about 55 minutes south of Iniala. If you are in the market to source some truly unique pieces, we can tailor a half-day experience to visiting some of the finest shops on the island which stock antiques such as intricate wood carvings, bronze pieces, precious materials and fine art.

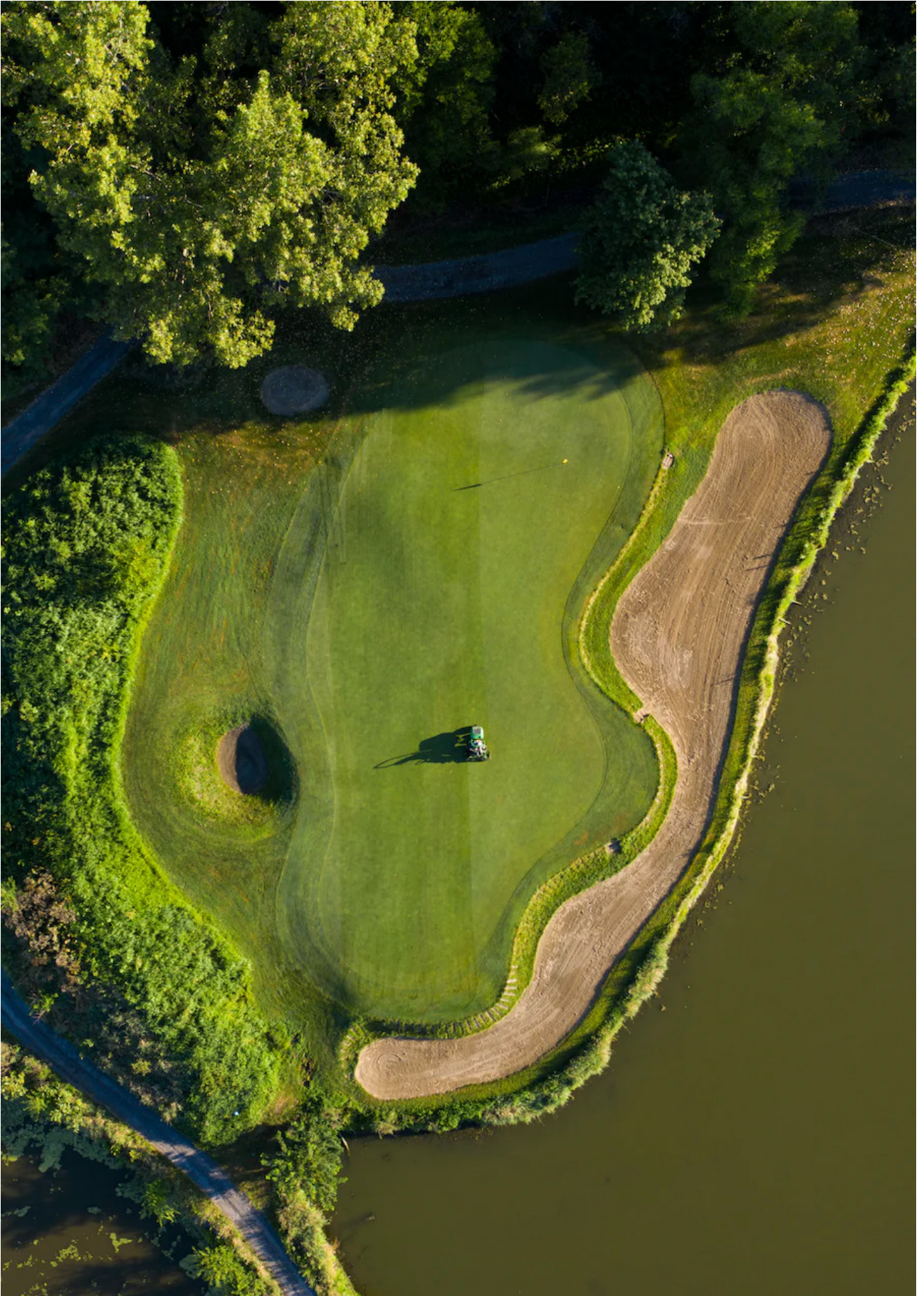


SHOPPING MALLS & DEPARTMENT STORES

There are currently two large shopping malls in Phuket; Central Festival and Jungceylon. Central Festival is Phuket's main mall and offers a full range of international shops such as Zara, H&M, Guess and Calvin Klein. Jungceylon is more dedicated towards tourists offering souvenirs, fisherman pants, sarongs and Thai arts and crafts. Both shopping malls feature large multiplex cinemas and offer a range of food and beverage outlets.

CENTRAL FESTIVAL:	CENTRAL PHUKET
CENTRAL FLOSRESTA:	45 MINS FROM INIALA
JUNGCEYLON:	PATONG
CENTRAL PATONG:	90 MINS FROM INIALA
PORTO DE PHUKET:	CHENGTALAY
	45 MIN FROM INIALA





GOLF

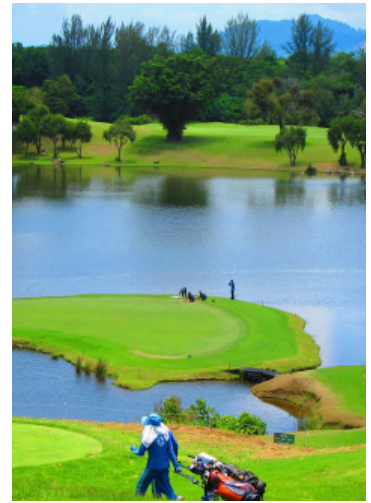
GOLF COURSES

BLUE CANYON GOLF & COUNTRY CLUB

20 MINS FROM INIALA

In addition to being beautifully laid out and challenging, this award-winning 18-hole course was once voted the 'Best in Asia' and has played host to the PGA Tournament.

	18 HOLES
Canyon Course	3,500 THB
Lake Course	3,000 THB

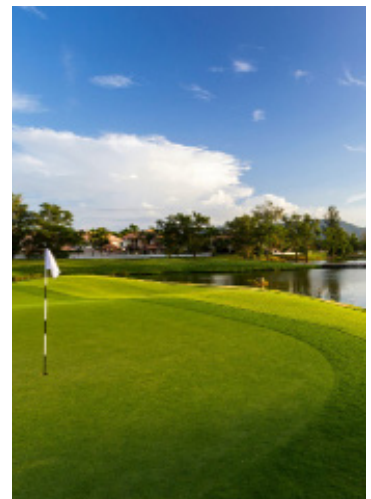


LAGUNA GOLF CLUB

45 MINS FROM INIALA

Resort-style course is moderately challenging, set on a rolling valley overlooked by low wooded hills.

	18 HOLES	9 HOLES
Course	3,600 THB	2,000 THB
Golf Cart	700 THB	400 THB
Caddy	350 THB	250 THB



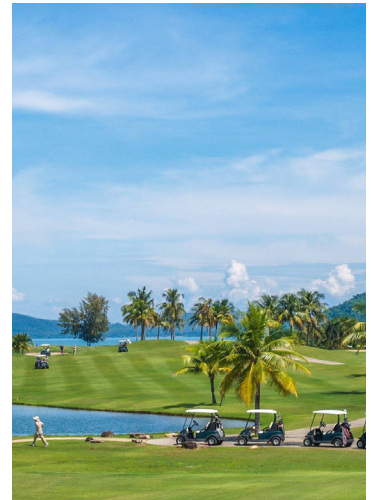
GOLF COURSES

MISSION HILLS GOLF RESORT & SPA

40 MINS FROM INIALA

Set on Phuket's east coast, this 18-hole course features a dramatic layout and ocean views. A 9-hole night golf course is also available.

	18 HOLES
Course	2,800 THB
Caddy	500 THB



LOCH PALM GOLF CLUB

75 MINS FROM INIALA

Situated around a crystal lake, the glistening central feature of the course is the largest body of water on any Phuket golf course.

	18 HOLES	9 HOLES
Course	4,500 THB	2,490 THB

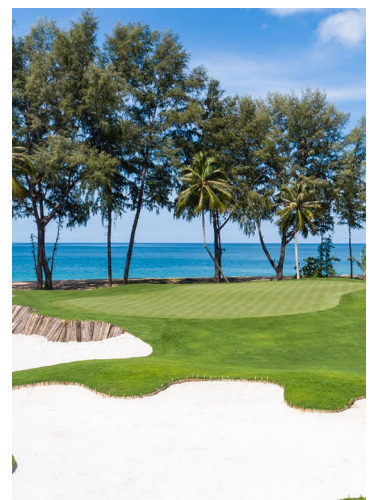


AQUILA

Course. Tee off on 18hole, 72-par, 7,000-yard course with lush greens and infinite blue waters surrounding you. View the golf course.

	18 HOLES	9 HOLES
Course	3,400 THB	2,210 THB

CLOSE: TUESDAY





BOAT TRIP

PHANG NGA BAY

KOH PANAK

Panak island is the traditional place to travel in a canoe, in which about 9 interconnected lagoons and the sea, many caves and tunnels. Huge in size, he laced lagoons, both under water and above it. If you are lucky, and will tide you can see, natural reseeding canoeing, cave 150 meters long, and in the end will see a huge, beautiful lagoon.



KOH HONG

Part of the National Marine Park, the four superb islands of the Koh Hong are set against the spectacular backdrop of Phang Nga Bay, with its countless rocky outcrops, the islands are rightly considered to be among the most beautiful in Krabi province. The main island, Koh Hong is uninhabited, except for the birds, white-faced gibbons and monitor lizards that can be often spotted on the main white sand beach. It has stunning twin bays on its east side, and two rockier beaches on its north shore. The rest of the island is comprised of high cliffs, surrounding a large lagoon at its interior – the “chamber” to which its Thai name, “Hong”, refers.

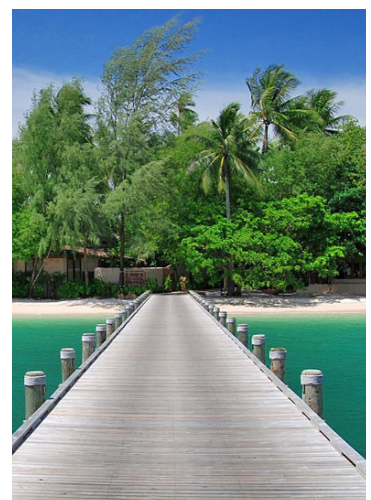


KOH NAKA

- water sport activities i.e. water ski, jet ski, banana boat, etc.

Naka Islands are just off the northeast coast of Phuket. There are two islands, Koh Naka Yai (big) and Koh Naka Noi (little). The islands are still mostly undeveloped although one luxury resort has set up shop here. There are some lovely beaches around the two islands and they are well worth a visit.

The most common way people visit the Naka Islands is as part of a Phang Nga Bay daytrip. However, it is also possible to make your own way to the Naka Islands and you can also stay here.



PHANG NGA BAY

KOH PANYEE (GYPSY VILLAGE)

- Visit local village for shopping and restaurants

Koh Panyee is a surprising village almost entirely built on stilts in Phang Nga Bay near the famous James Bond Island. Koh Panyee is a very unusual and exciting site to discover, but it can be hectic, especially at lunchtime because of the many seafood restaurants. The central part of Koh Panyi is a concrete floor connecting dozens of tiny souvenir shops, and from there, a narrow maze of uneven planks lead to the population's houses. Start exploring and you'll get easily lost in the network of walkways and tiny shops, all selling tee shirts, batiks and stuff made of shells.



KOH TAPU (JAMES BOND ISLAND)

- Sight seeing

Koh Tapu is located in Phang Nga Bay, it has become a famous landmark of Phang Nga Bay for the visitors worldwide since it was shown in the James Bond movie "The Man with the Golden Gun". It was known as the James Bond Island since then. The tiny island of a breathtaking beauty is just a limestone tower high 20 metres above sea level. All the area is now under the protection of the National Park, The stop on Koh Tapu is not allowed, and any kind of boats can not approach very close to the pinnacle cliffs, for their precarious position. The island is another wonderful example of what Mother Nature can do. Koh Phing Kan is a tropical paradise, with a beautiful white sand beach to the east, crystal clear water and some small caves inside. All the area is a popular destination among tourists for sailing as well as kayaking.



PHANG NGA BAY

KOH YAO NOI

Koh Yao Noi and Koh Yao Yai are a pair of large islands in the middle of Phang Nga Bay, equidistant to Phuket and the Krabi mainland. While the pace of development is accelerating on Koh Yao Noi in particular, the islands remain a quiet refuge that feels far removed from the crowds of Phuket. In 2002, Koh Yao Noi gained worldwide attention after receiving the World Legacy Award for Destination Stewardship from Conservation International and National Geographic Traveler magazine for the eco-friendly homestay programs offered by its local residents. Other activities available on the island include agricultural demonstrations (rubber and fishing), kayaking, hiking, snorkelling and swimming.

Koh Yao Noi does not have any particular landmark or stunning view point, nevertheless, while driving around, you will discover a place that has changed very little in 20 years, aside from a few more motorbikes and the new 7-Eleven. A drive around its quiet roads reveals a place of true peace and simplicity for the traveller. Wooden houses all along the roads, buffalos taking mud baths in the rice paddies, the cool, shaded roads passing through the many rubber plantations and the beauty of the mangrove with its trees standing in the middle of the sea are just a few of the natural charms of this simple island. You will find few restaurants and few bars along the coastline with only a small village near the pier with small local shops and all the government buildings including a school, hospital, police station, and electricity and post offices.



BOAT TRIP ITINERARY

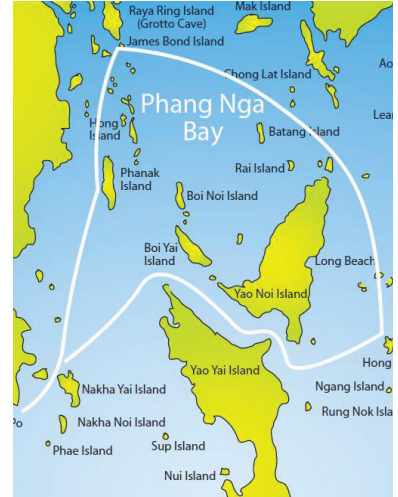
PHANG NGA BAY & KOH HONG KRABI

09:30 Departure from the marina.
Enter Phang Nga and cruise by Panak Island with its spectacular cliff formations and caves. Another island group is Hong Phang Nga with its lagoons which are a great spot for kayaking.

Explore James Bond Island where Roger Moore filmed "The man with the golden gun" in 1974.

Cruise to Pak Bia Island & Hong Krabi which boast an archipelago of 18 beautiful, small islands. It is a spectacular landscape with beautiful beaches and a good location to enjoy swimming & snorkeling.

17:30 Arrival back at the marina.



KRABI

09:30 Departure from the marina. Cruise to Hong Krabi which boast an archipelago of 18 beautiful, small islands. It is a spectacular landscape with beautiful beaches and a good location to enjoy swimming & snorkeling.

Explore Chicken Island in Krabi with a coral reef that lies 20 meters offshore. The combination of scenery, beach and excellent snorkeling make it one of your favorite places.

Enjoy the famous Railey Bay where is one of Thailand's most beautiful beaches, isolated from the mainland, the peninsula is surrounded by the Andaman Sea.

17:30 Arrival back at the marina.



BOAT TRIP ITINERARY

PHI PHI

09:30 Departure from the marina Cruise to Phi Phi Island, which is surrounded by vibrant looking turquoise waters making it a great destination to enjoy a memorable sightseeing time.

Stop at the Camel Rock, a huge limestone outcrop that juts out of the Andaman Sea at the entrance of Nui Bay, for some swimming and snorkeling.

Another spot is the so-called Monkey Beach, this natural gem is home to dozens of monkeys. It is a simply stunning 150m-long strip of white powdery sand fringed by emerald water.

There is also one large shallow fjord-like inlet called Phi Phi Lei with a small coral reef at the entrance.

17:30 Arrival back at the marina.



RACHA

09:30 Departure from the marina. Cruise south to Racha Yai Island. Located 12 km away, it reveals itself in splendid manner. The water there is clear and perfect for snorkeling.

The second island is Racha Noi which is a uninhabited rocky island. It provides several secluded covers to moor the yacht in the relax surrounded by stunning scenery and to snorkel the beautiful reefs the island is fringed with.

Optionally, you can cruise to Coral Island in the afternoon - a picturesque island surrounded by colorful coral reefs.

17:30 Arrival back at the marina





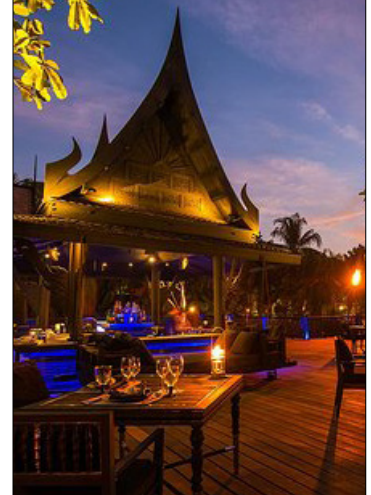
RESTAURANTS

THAI & LOCAL FLAVOURS

BLACK GINGER

Authentic flavours of Phuket in a modern masterpiece of ancient Thai architecture, floating magically over a softly-lit lagoon. Each dish is a carefully crafted mix of flavours honed from centuries of the island's multi-cultural heritage, served in an enigmatic setting of traditional Thai forms and renowned Thai service. Black Ginger delivers the true tastes of Phuket in a truly superior atmosphere.

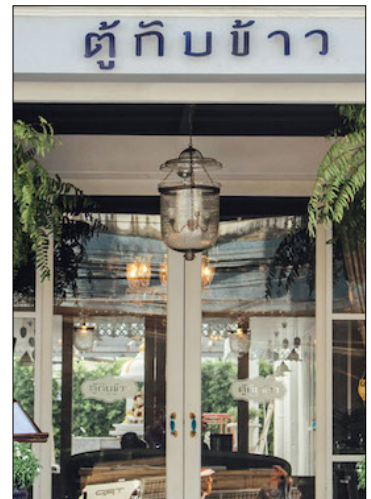
DAILY: FROM 6:00PM
AREA: NAI YANG
 25 MINS FROM INIALA



TU KAB KHAO (Southern Thai)

Set in a grand Chino-Portuguese building, Tu Kab Khao is both elegant and atmospheric, with portraits of the Royal Family gracing its walls, along with one of the owner's mother, Khun Linchii, whose recipes inform the menu. Don't miss the subtly spiced fresh crab meat curry or the robust flavours of the slow-cooked pork in the Moo Hong dish. Sit in the front section for a homely feel, or the Portuguese-tiled rear room for privacy. Nightly live music adds to the mood.

DAILY: 11:30AM – 9:30PM
AREA: PHUKET TOWN
 1 HOUR FROM INIALA



THAI & LOCAL FLAVOURS

KIN DEE

'Kin Dee' means 'eat well' in Thai and it's a fitting name for a restaurant that was once awarded as having the 'Best Massaman Curry in Thailand' by CNN. Located close to Phuket's Sarasin Bridge, the restaurant serves genuine Thai food in a beautiful setting with a kitchen helmed by an ex-five star chef and her family.

DAILY: 11:00AM – 9:00PM
AREA: SARASIN
 10 MINS FROM INIALA



SUAY (Thai Contemporary)

The acronym of 'sassy, unique, authentic and yummy' may sound kitsch, but the airy and bright interior with its Portuguese-tiled floor is anything but. Owner-chef Tammasak, trained and brought up in Germany, skilfully updates Thai food with modern techniques and artsy presentations. Dishes, including the signature braised beef cheek in Massaman curry, are seasoned with bold but well-judged spicing. Try the set menus to sample the variety on offer.

DAILY: 4:00 PM – 10:30 PM
AREA: CHERNG TALAY
 45 MIN FROM INIALA

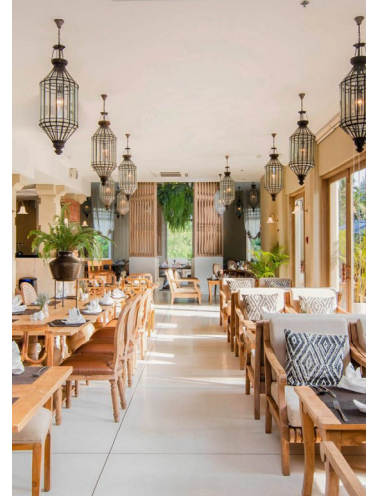


THAI & LOCAL FLAVOURS

TAKOLA THAI RESTAURANT

Unforgettable moments of happiness can sometimes come along in the form of the most delicious food. Located within a pleasant ambiance, "Devasom Khao Lak" is proud to bring you Takola Restaurant, offering authentic Southern Thai Cuisine and a variety of delicacies from sunrise to sunset. Made from the heart, fall in love with special dishes cooked to perfection with fresh, quality ingredients. But most importantly, taste the charm of original flavors, created by team of experienced Thai chef.

DAILY: 11:00PM – 11:00PM
AREA: DEVASOM KHAO LAK HOTEL
 KHAO LAK
 60 MINS FROM INIALA



BAAN AR JOR

Baan A Jor is a hotel, a restaurant and a museum with a long history that started in 1936. This house has always been one of the most mysterious old mansions of Phuket, standing lonely near Mai Khao Beach in the north of Phuket. Unlike other mansions mostly found in town, Baan Ar Jor is isolated away from any village and very far from Phuket Town. To reach it, you will have to drive to the very north of Phuket Island, and drive past the Phuket International Airport on your way to the Sarasin Bridge.

DAILY: 10:00 PM – 10:00 PM
AREA: MAI KHAO BEACH
 20 MIN FROM INIALA



THAI & LOCAL FLAVOURS

FASHI RESTAURANT

ashi is local restaurant that serves various style of menu from Thai, Southern and Western food.

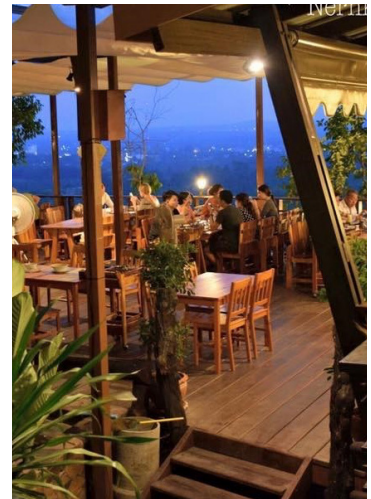
DAILY: 11:00AM – 11:00PM
AREA: KLOK KLOI
 10 MINS FROM INIALA



NERN KHAO VIEW TALAY

NERN KHAO View Talay Restaurant has a charming view of the surrounding green hills. It has elegant wooden décor with a traditional rustic feel and a calm and serene atmosphere. It also offers its customers a very varied menu to ensure that all tastes are catered for. Dishes served include curry soup, charcoal grilled fish and herbal salad Seafood and papaya salad that offers a mixture of sweet and sour flavors, and many more delicious items.

DAILY: 10:00 AM-09:00 PM
AREA: KLOK KLOI
 15 MIN FROM INIALA



WESTERN & INTERNATIONAL

SIAM SUPPER CLUB

The Siam Supper Club's is an island institution and its art deco interior is 1920's America in all its glory. The Chicagoan owner, Sean sets the mood as he meanders around clicking his fingers to the music and greeting every guest. The menu is best described as 'west coast cuisine' with a comforting approach executed with luxurious flavour. Do not miss Live Jazz Mondays where a funky quarter provide the soundtrack to your evening.

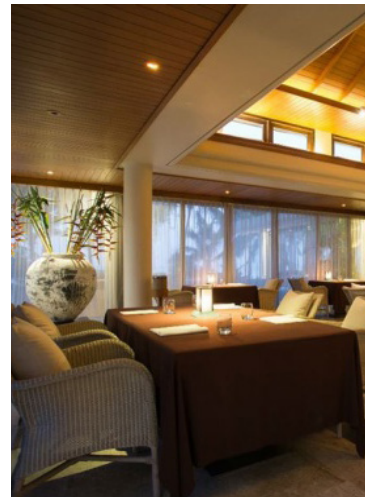
DAILY: FROM 6:00PM
 AREA: LAGUNA
 45 MINS FROM INIALA



PRU *Innovative, 1 michelin **

An acronym for Plant, Raise, Understand: PRU is a tribute to the unique terroir of the Andaman region. All ingredients used by Executive Chef Jimmy Ophorst are grown on their own farm, foraged locally or sourced through a community of local farmers, fishermen and purveyors. An inventive and original take on fine dining 'farm-to-table' cuisine.

DAILY: FROM 6:00PM
 (CLOSED TUESDAY / WEDNESDAY)
 AREA: NAI THON BEACH
 40 MINS FROM LAGUNA
 ONLINE DEPOSIT 3,000/PAX



JAMPA

JAMPA's concept is farm-to-fork-based serving creative food with a menu of sophisticated tasty and nutritious dishes that changes daily, based on what the local sea and sand has to offer.

DAILY: LUNCH 12:00PM-15:00
 DINNER 18:00-21:00
 CLOSED MONDAYS & TUESDAY
 AREA: THALANG
 45 MINS FROM INIALA



WESTERN & INTERNATIONAL

BENIHANA

With its first outlet in Phuket, Benihana has now created Nest at JW Marriott in Mai Khao Beach Phuket, showcasing the ultimate Japanese steakhouse experience.

We invite you to a communal Hibachi table where your personal chef will be performing the ancient art of Teppanyaki in a highly theatrical yet friendly setting sit back, enjoy the show, and savor the authentic tastes of Japan. From mouth-watering steaks of succulent grilled seafood tender chicken to fresh vegetables grilled to perfection a delicious experience awaits you.

DAILY: LUNCH 12:00 PM - 2:30 PM
DINNER 5:00 PM - 11:00 PM

AREA: MAI KHAO BEACH
20 MINS FROM INIALA



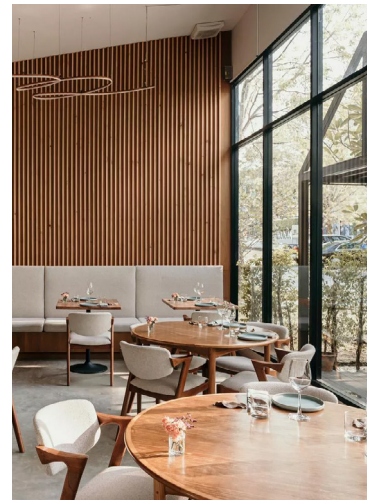
NITAN

*Fine Dining **

Nitan is a comfortable gastronomic destination where people can indulge in beautifully and tastefully fine dining inspired by global influences, accompanied by genuine hospitality. Located in laidback Phuket. Established in 2019. Listed Best Restaurant 2020 in Thailand by Thailand Tatler and Michelin Plate on 2022.

DAILY: 7:00 PM - 9:30 PM

AREA: CHERNG TALAY
45 MINS FROM INIALA



WESTERN & INTERNATIONAL

ROYD

*Fine Dining **

Invite you to discover through their compiles of culinary journeys and inspirations of locally sourced ingredients, rich yet subtle in flavours. A proper reintroduction to Southern Thai savours is carefully chosen through the context of ROYD, a local read that translates as both 'delicious' and 'unique coolness'

DAILY: 6:00 PM - 11:00 PM
 AREA: PHUKET TOWN
 1 HOUR FROM INIALA



LITTLE PARIS

Little Paris is the perfect place to go for French and Thai cooking in Phuket.

DAILY: 08:30 AM-11:00 PM
 AREA: BOAT AVENUE
 45 MINS FROM INIALA



CLAWS AND CO SEAFOOD RESTAURANT

Indulge in Canadian Lobster, Tiger Shrimp, Blue Crab platters & more at Claws & Co. Enjoy snazzy cocktails & fine wines as you dine on the best seafood in Mai Khao Phuket. Lobster, Shrimp & Crab Fresh Catch of the Day Outdoor Seating Casual Dining in Phuket

DAILY: 12:00 PM - 11:0 PM
 AREA: AVANI MAIKHAO
 20 MINS FROM INIALA



BEACH CLUBS & BARS

BABA BEACH CLUB

Whilst not fully open yet, Baba Beach Club 1.0 provides a fun and enjoyable atmosphere within a little slice of chill out paradise. The large beachfront lawn is the perfect spot to kick-back in a bean bag and lose an afternoon to total relaxation.

DAILY: FROM 11:00AM
AREA: NATAI BEACH
 5 MINS FROM INIALA



CATCH BEACH CLUB

Once voted in the 50 Best Beach Bars in the World, Catch Beach Club is back open after a hiatus last year. Set on Bangtao Beach, it is undoubtedly Phuket's most stylish beach club. Bringing glamour and exciting tropical nights to the sands of Phuket, this is the perfect spot for fabulous seaside dining and a little partying for dessert.

DAILY: FROM 09:00AM
AREA: BANGTAO BEACH
 1 HOUR FROM INIALA



KARKINOS BEACH CLUB

Let the scenery of pure nature steal your breath away. Imagine spending your lazy summer day in an aesthetic 'open-air beach club' that blurs the line between nature and architecture, blends in the sandy beach to your feet at the seating area that full of fresh foods, and good friends. KARKINOS is a beach club and Italian restaurant overlooking the pristine Pakarang Beach. Immerse yourself in the surrounding nature, feel your feet in the sand, surf the ocean waves, enjoy fresh food, good music, and create memorable moments.

DAILY: 11:00AM-10:00PM
 CLOSE EVERY MONDAY
AREA: KHAOLAK
 1 HOUR FROM INIALA

BEACH CLUBS & BARS

CAFÉ DEL MAR

The legendary chill-out bar from Ibiza has arrived on the shores of Phuket.

Whether you're looking for some daytime fun in the sun or a relaxing day by the pool sipping cocktails alongside mouth-watering food, Café Del Mar has it all.

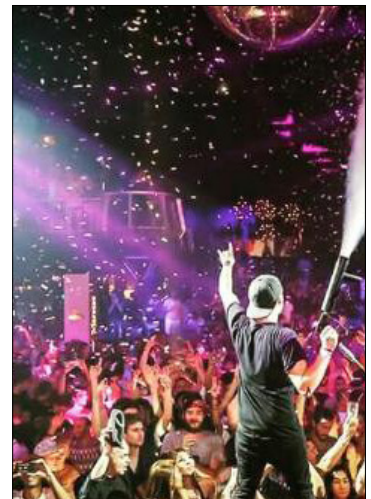
AREA: KAMALA
1.5 HOURS FROM INIALA



ILLUZION CLUB

The DJs and dancers coordinated by a European choreographer make Illuzion one of the best entertainment night clubs in Thailand. They regularly have big name international acts so be sure to check their monthly line-up.

AREA: PATONG
1.5 HOURS FROM INIALA



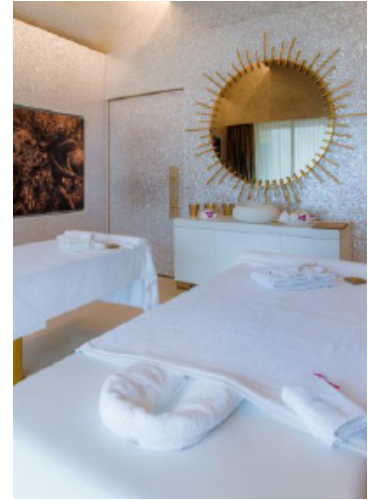


INIALA AMENITIES

INIALA SPA

Enjoy some pampering by experiencing a traditional Thai massage or one of our divine body treatments. Our in-house spa therapists specialise in massages, body treatments, facials, manicures and pedicures. Their extensive experience and quiet disposition means that an hour or two with them will leave you completely relaxed and invigorated.

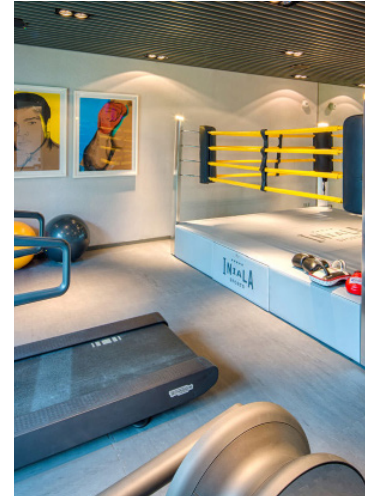
For a more extended selection of massages, treatments and pricing, please consult our spa/activities directory located in your suite or discuss with your villa manager directly.



GYM

Located on the ground floor, Next to – Kids Hotel', our fitness suite features state of the art equipment and a full spectrum of free weights and machines for optimal aerobic and anaerobic workouts. The space is multi-functional by design, suitable for every level of guest from novice to advanced athletes.

In addition we also have a custom-made Thai Boxing ring available for all guests use at their leisure and sparring partners/instructors on standby should you require some informal coaching.

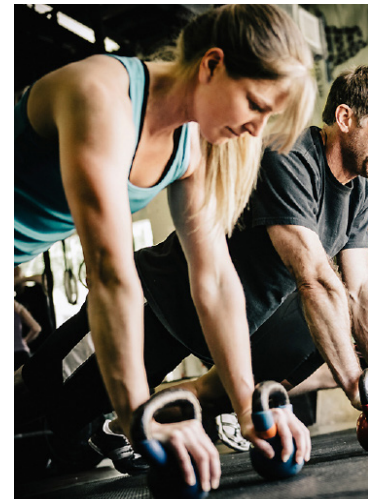


FITNESS PROGRAMS

If maintaining your fitness while on holiday is your objective, we offer personal training to meet your needs. Under the professional guidance of a personal trainer, you can enjoy a workout in the gym (we have a treadmill, cross trainer, free weights and a boxing ring) or outside on the white sands of Natai Beach.

Each session starts with a consultation to tailor a suitable program for your goals, with energizing training sessions ranging from endurance, strength, cardio or wellbeing.

We have a class to suit all ages and abilities so please consult our spa/activities directory for an in-depth overview of each session available and their relevant charges per hour.



YOGA

In addition to our daily scheduled group classes, our resident yoga instructor is available to conduct private yoga classes either on your pool deck or at the beach with the soundtrack of the waves in the background.

Please consult our spa/activities directory for an in-depth overview of the yoga disciplines available and relevant charges per hour. Kid yoga also available on request.



INSPIRASIA

Philanthropy is the pulse of Iniala and is built into our business model. 10% of room revenues and 5% of other revenues go directly to the Inspirasia Foundation, which is committed to funding exceptional projects in health and education throughout Asia. The Inspirasia Foundation is a private foundation supporting many health and education projects across South East Asia including:

INDONESIA

East Bali Poverty Project
PUSPADI Bali
UCP Wheels
YPK Indonesia

THAILAND

Goodwill Group
Home & Life Orphanage
FED Thailand

INDIA

CORP India

The Annika Linden Centre is a purpose built incubator for high potential social sector leaders and a regional hub of excellence for social change in Bali, Indonesia. The centre is the flagship project for the Inspirasia Foundation and is their first ever investment in a social enterprise. Since opening in 2013, it now supports 10 outstanding local non-profit organisations.

www.inspirasia.org

Inspirasia
FOUNDATION





INIALA

BEACH HOUSE · THAILAND