



## Junior Suite

The Junior Suites offer complete comfort for 1-2 guests with a seating area, a chinoiserie embellished lacquered wood bar experience, a walk-through dressing area and an en-suite bathroom bathed in natural light.

### ROOM FEATURES

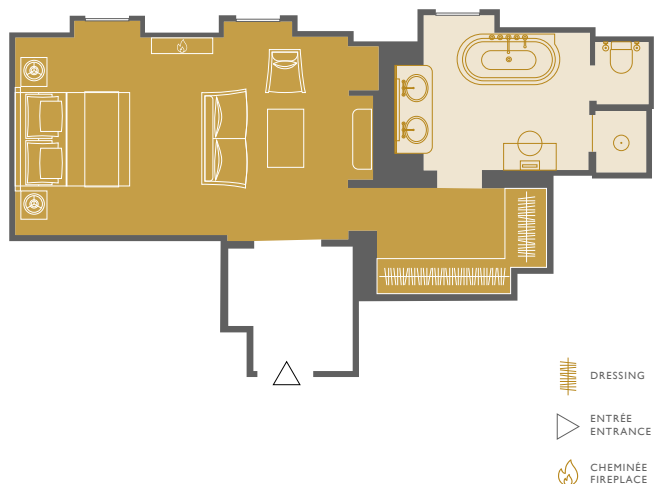
- 2 adults or 1 adult and 1 child
- 55 m<sup>2</sup> (592 sq.ft)
- Courtyard view
- Fireplace
- Connecting rooms available on request
- Accessible room
- Wifi

### COMPLIMENTARY SERVICES INCLUDED

- Breakfast for two at Le Jardinier restaurant (à la carte) or in-room
- In-room experience bar\*
- Airport transfer\*\*
- A VIP welcome amenity upon arrival
- Press Reader access

\* The experience bar includes all alcohol-free drinks.

\*\* For two nights and more , we are delighted to extend a round-trip transfer from Geneva airport in a private car with chauffeur.



THE WOODWARD  
Quai Wilson 37,  
1201 Genève, Suisse

OETKER COLLECTION  
Masterpiece Hotels

CONTACT US  
reservations.twg@oetkercollection.com

oetkercollection.com  
#MasterpieceHotels



## Deluxe Suite

The Deluxe Suites open into a beautiful foyer accented by a console table in copper leaf steel by Pouenat. The large living room features a marble fireplace, chinoiserie embellished lacquered wood bar experience and a window overlooking Place Jean-Marteau and Lake Geneva. Spacious and inviting, the bedroom is designed with handmade marquetry panelling along one wall and a marble en-suite bathroom.

### ROOM FEATURES

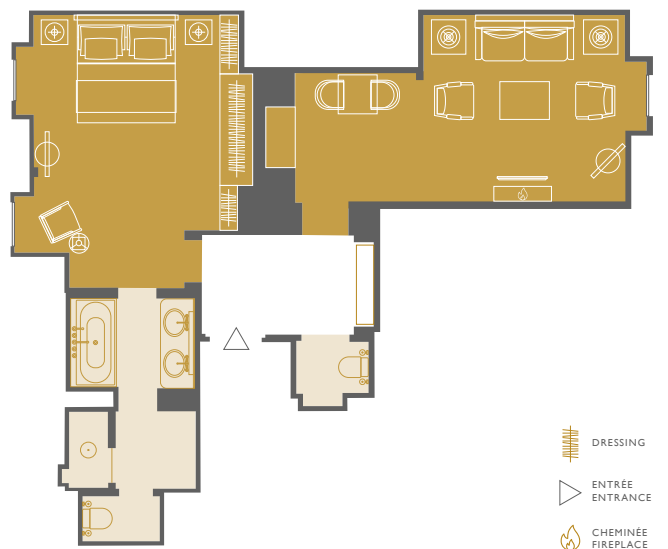
- 3 adults or 2 adults and 1 child
- 77 m<sup>2</sup> (828 sq.ft)
- Courtyard view
- Fireplace
- Connecting rooms available on request
- Extra bed available on request
- Wifi

### COMPLIMENTARY SERVICES INCLUDED

- Breakfast for two at Le Jardinier restaurant (à la carte) or in-room
- In-room experience bar\*
- Airport transfer\*\*
- A VIP welcome amenity upon arrival
- Press Reader access

\* The experience bar includes all drinks (except Wine and Champagne).

\*\* For two nights and more , we are delighted to extend a round-trip transfer from Geneva airport in a private car with chauffeur.



THE WOODWARD  
Quai Wilson 37,  
1201 Genève, Suisse

OETKER COLLECTION  
Masterpiece Hotels

CONTACT US  
[reservations.twg@oetkercollection.com](mailto:reservations.twg@oetkercollection.com)

[oetkercollection.com](http://oetkercollection.com)  
#MasterpieceHotels



## Executive Suite

The Executive Suites open into a small foyer leading directly to the living room featuring a marble fireplace, chinoiserie embellished lacquered wood bar experience and window overlooking Place Jean-Marteau and Lake Geneva. The adjoining bedroom, separated by handmade marquetry wood sliding doors, is designed with a large, walk-in closet and en-suite bathroom. Windows in every room offer an abundance of natural light.

### ROOM FEATURES

- 2 adults or 1 adult and 1 child
- 65 m<sup>2</sup> (700 sq.ft)
- Lake view
- Balcony
- Fireplace
- Connecting rooms available on request
- Wifi



### COMPLIMENTARY SERVICES INCLUDED

- Breakfast for two at Le Jardinier restaurant (à la carte) or in-room
- In-room experience bar\*
- Airport transfer\*\*
- A VIP welcome amenity upon arrival
- Press Reader access

\* The experience bar includes all drinks (except Wine and Champagne).

\*\* For two nights and more , we are delighted to extend a round-trip transfer from Geneva airport in a private car with chauffeur.



THE WOODWARD  
Quai Wilson 37,  
1201 Genève, Suisse

OETKER COLLECTION  
Masterpiece Hotels

CONTACT US  
[reservations.twg@oetkercollection.com](mailto:reservations.twg@oetkercollection.com)

[oetkercollection.com](http://oetkercollection.com)  
#MasterpieceHotels





## Bellevue Suite

The Bellevue Suite is the only one of its kind at The Woodward. The living room features a sloped ceiling with exposed beams, a gas fireplace and a supremely elegant bar experience. A lacquered wood hallway with two closets leads to the spacious bedroom, complete with a discrete writing desk facing the window. Each room features dormer windows overlooking the marina and Lake Geneva.

### ROOM FEATURES

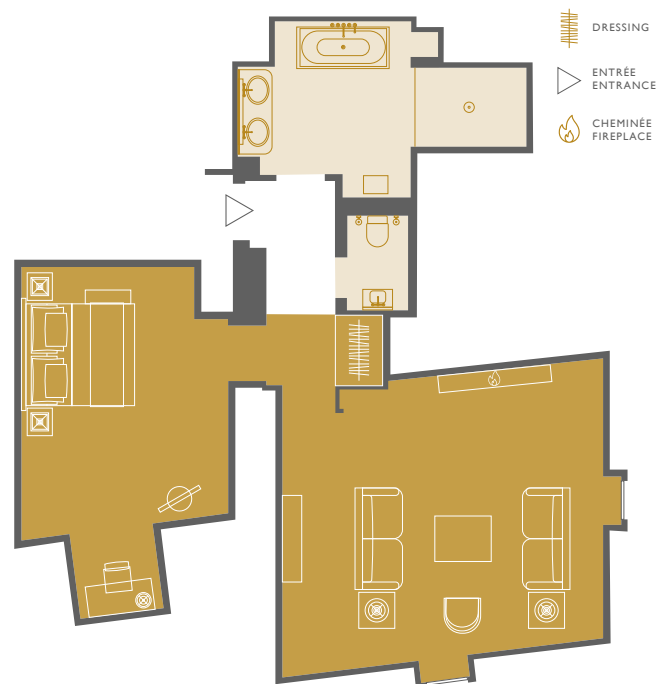
- 2 adults or 1 adult and 1 child
- 80 m<sup>2</sup> (861 sq.ft)
- Lake view
- Fireplace
- Wifi

### COMPLIMENTARY SERVICES INCLUDED

- Breakfast for two at Le Jardinier restaurant (à la carte) or in-room
- In-room experience bar\*
- Airport transfer\*\*
- A VIP welcome amenity upon arrival
- Press Reader access

\* The experience bar includes all drinks (except Wine and Champagne).

\*\* For two nights and more , we are delighted to extend a round-trip transfer from Geneva airport in a private car with chauffeur.



THE WOODWARD  
Quai Wilson 37,  
1201 Genève, Suisse

OETKER COLLECTION  
Masterpiece Hotels

CONTACT US  
reservations.twg@oetkercollection.com

oetkercollection.com  
#MasterpieceHotels



## Suite Léman

The top floor Léman Suite features a large living room with a majestic domed ceiling accented by a Baccarat crystal chandelier. The spacious bedroom is designed with two lacquered wood armoires and a discrete writing desk facing the window. The bathroom offers natural light and a side view overlooking the lake and the French Alps.

### ROOM FEATURES

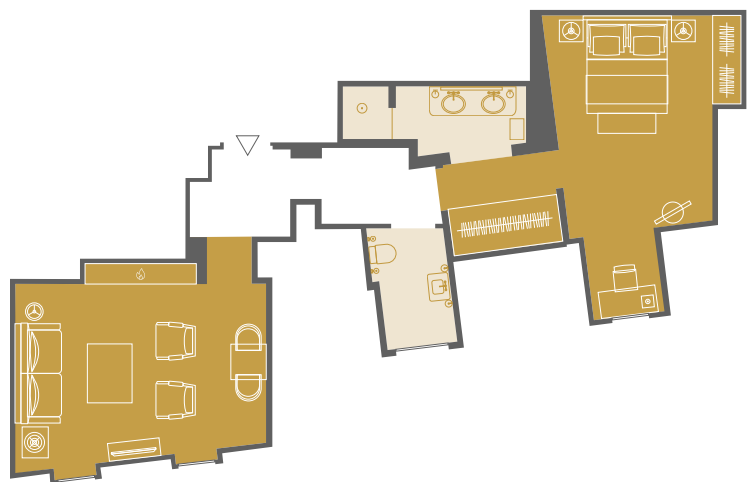
- 3 adults or 2 adults and 1 child
- 80 m<sup>2</sup> (861 sq.ft)
- Lake view
- Fireplace
- Extra bed available on request
- Wifi

### COMPLIMENTARY SERVICES INCLUDED

- Breakfast for two at Le Jardinier restaurant (à la carte) or in-room
- In-room experience bar\*
- Airport transfer\*\*
- A VIP welcome amenity upon arrival
- Press Reader access

\* The experience bar includes all drinks (except Wine and Champagne).

\*\* For two nights and more , we are delighted to extend a round-trip transfer from Geneva airport in a private car with chauffeur.



THE WOODWARD  
Quai Wilson 37,  
1201 Genève, Suisse

OETKER COLLECTION  
Masterpiece Hotels

CONTACT US  
reservations.twg@oetkercollection.com

oetkercollection.com  
#MasterpieceHotels



## Collection Suite

The Collection Suites offer a living room bathed in natural light with a marble fireplace, lacquered wood bar experience and French balcony overlooking Lake Geneva and the Alps. The adjoining bedroom is designed with handmade marquetry panelling along one wall and a separate balcony with breathtaking panoramic lake views. Accessible from the walk-in dressing room, the large bathroom includes balcony access. Ideal for a honeymoon or couple's getaway.

### ROOM FEATURES

- 2 adults or 1 adult and 1 child
- 66 m<sup>2</sup> (710 sq.ft)
- Lake view
- Balcony
- Fireplace
- Wifi

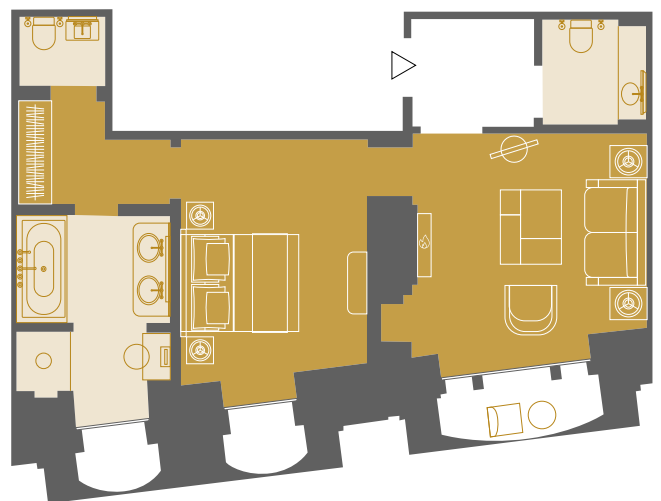


### COMPLIMENTARY SERVICES INCLUDED

- Breakfast for two at Le Jardinier restaurant (à la carte) or in-room
- In-room experience bar\*
- Airport transfer\*\*
- A VIP welcome amenity upon arrival
- Press Reader access

\* The experience bar includes all drinks (except Wine and Champagne).

\*\* For two nights and more, we are delighted to extend a round-trip transfer from Geneva airport in a private car with chauffeur.



THE WOODWARD  
Quai Wilson 37,  
1201 Genève, Suisse

OETKER COLLECTION  
Masterpiece Hotels

CONTACT US  
reservations.twg@oetkercollection.com

oetkercollection.com  
#MasterpieceHotels



*The*  
**WOODWARD**  
GENEVA

## Prestige Suite

The Prestige Suite is designed for complete discretion with private elevator access. The vestibule opens into the living room featuring a marble fireplace and a large balcony with a table and four chairs for enjoying breakfast or a drink overlooking Lake Geneva. The bedroom is designed with handmade marquetry panelling and a large, walk-in closet in lacquered wood. The en-suite bathroom is bathed in natural light. All rooms in the Prestige Suite offer views overlooking the lake and the French Alps.

### ROOM FEATURES

- 2 adults or 1 adult and 1 child
- 65 m<sup>2</sup> (700 sq.ft)
- Lake view
- Terrace
- Fireplace
- Wifi

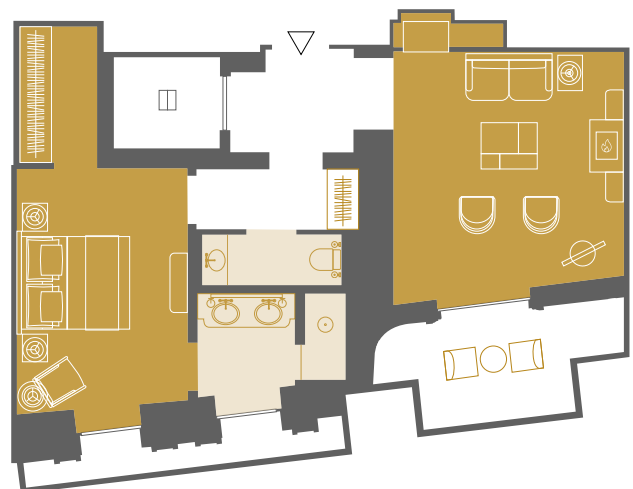


### COMPLIMENTARY SERVICES INCLUDED

- Breakfast for two at Le Jardinier restaurant (à la carte) or in-room
- In-room experience bar\*
- Airport transfer\*\*
- A VIP welcome amenity upon arrival
- Press Reader access

\* The experience bar includes all drinks (except Wine and Champagne).

\*\* For two nights and more, we are delighted to extend a round-trip transfer from Geneva airport in a private car with chauffeur.



THE WOODWARD  
Quai Wilson 37,  
1201 Genève, Suisse

OETKER COLLECTION  
Masterpiece Hotels

CONTACT US  
reservations.twg@oetkercollection.com

oetkercollection.com  
#MasterpieceHotels





## Woodward Suite

The Woodward Suite, the only one of its kind in the hotel, features a luminous living room with panoramic lake views on two sides. The walk-through dressing area in dark lacquered wood leads to a separate bathroom and the bedroom designed with handmade marquetry panelling along one wall. Both the bathroom and bedroom feature lake-facing balconies.

### ROOM FEATURES

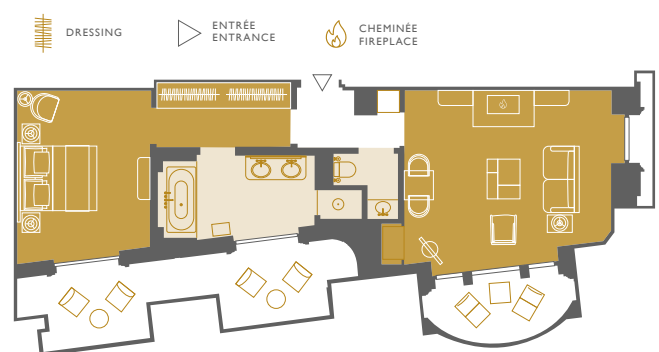
- 3 adults or 2 adults and 1 child
- 78 m<sup>2</sup> (839 sq.ft)
- Lake view
- Balcony
- Fireplace
- Connecting rooms available on request
- Extra bed available on request
- Wifi

### COMPLIMENTARY SERVICES INCLUDED

- Breakfast for two at Le Jardinier restaurant (à la carte) or in-room
- In-room experience bar\*
- Airport transfer\*\*
- A VIP welcome amenity upon arrival
- Press Reader access

\* The experience bar includes all drinks (except Wine and Champagne).

\*\* For two nights and more, we are delighted to extend a round-trip transfer from Geneva airport in a private car with chauffeur.



THE WOODWARD  
Quai Wilson 37,  
1201 Genève, Suisse

OETKER COLLECTION  
Masterpiece Hotels

CONTACT US  
reservations.twg@oetkercollection.com

oetkercollection.com  
#MasterpieceHotels





*The*  
**WOODWARD**  
GENEVA

## Suite Mont Blanc

Designed for absolute comfort and versatility, the Mont Blanc Suites feature a large living room with a marble fireplace, a writing desk and a round dining table for four. The bedroom is accessed by a long, walk-through dressing area in dark lacquered wood. Both the bedroom and en-suite bathroom feature balconies facing Lake Geneva and the French Alps.

### ROOM FEATURES

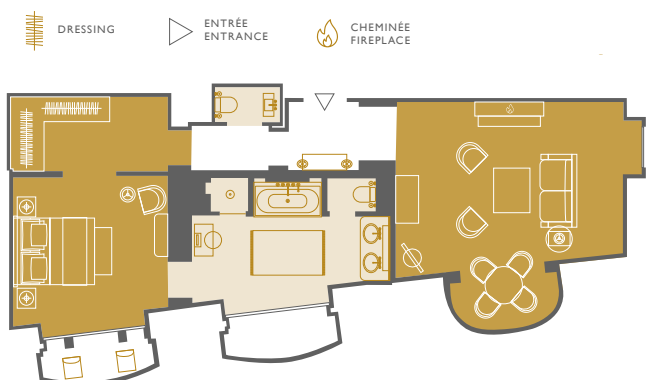
- 2 adults or 1 adult and 1 child
- 93 m<sup>2</sup> (1001 sq.ft)
- Lake view
- Balcony
- Fireplace
- Connecting rooms available on request
- Wifi

### COMPLIMENTARY SERVICES INCLUDED

- Breakfast for two at Le Jardinier restaurant (à la carte) or in-room
- In-room experience bar\*
- Airport transfer\*\*
- A VIP welcome amenity upon arrival
- Press Reader access

\* The experience bar includes all drinks (except Wine and Champagne).

\*\* For two nights and more, we are delighted to extend a round-trip transfer from Geneva airport in a private car with chauffeur.



THE WOODWARD  
Quai Wilson 37,  
1201 Genève, Suisse

OETKER COLLECTION  
Masterpiece Hotels

CONTACT US  
reservations.twg@oetkercollection.com

oetkercollection.com  
#MasterpieceHotels



## Presidential Suite

The Presidential Suite is designed for absolute comfort and total privacy. The expansive living room features a large wraparound sofa and twin chairs for relaxing by the fire. Separated by French doors is a dining room with a long table and space for up to 10. A side-facing loggia extends the entire length of the living room and dining room with beautiful views over the marina and Lake Geneva. The bedroom is separated from the living spaces by a long hallway and walk-through dressing room and is designed with royal blue tapestries by Rubelli and Lelièvre. The immense, light-filled bathroom is the largest in the hotel. The Presidential Suite is ideal for heads of state and political delegations and can be adjoined with the Woodward Suite. Both the living room and dining room can be privatised for special events.

### ROOM FEATURES

- 140m<sup>2</sup> (2346 sq.ft)
- Available in 2 bedroom-suite
- Lake view
- Terrace
- Fireplace
- Connecting rooms available on request
- Meeting boardroom
- Wifi

### COMPLIMENTARY SERVICES INCLUDED

- Breakfast for two at Le Jardinier restaurant (à la carte) or in-room
  - In-room experience bar\*
  - Airport transfer
  - A VIP welcome amenity upon arrival
  - Press Reader access
- \* The experience bar includes all drinks.
- \*\* We are delighted to extend a round-trip transfer from Geneva airport in a private car with chauffeur.



THE WOODWARD  
Quai Wilson 37,  
1201 Genève, Suisse

OETKER COLLECTION  
Masterpiece Hotels

CONTACT US  
reservations.twg@oetkercollection.com

oetkercollection.com  
#MasterpieceHotels



## Royale Suite

The largest in the hotel, the Royal Suite can be accessed directly by a private elevator. A large private dining room features seating for up to 10, a marble fireplace and two balconies overlooking Lake Geneva and the French Alps. The expansive living room offers two additional lake-facing balconies, a fireplace, generous seating and a Baccarat crystal chandelier. Just off the living room is a kitchenette that includes a separate entry. The bedroom is reached through a long, walk-through dressing area and is designed with a writing desk by Nicolas Aubagnac, handmade marquetry wood panelling and an immense marble en-suite bathroom. The Royal Suite can be adjoined with the Executive Suite and Deluxe Suite.

### ROOM FEATURES

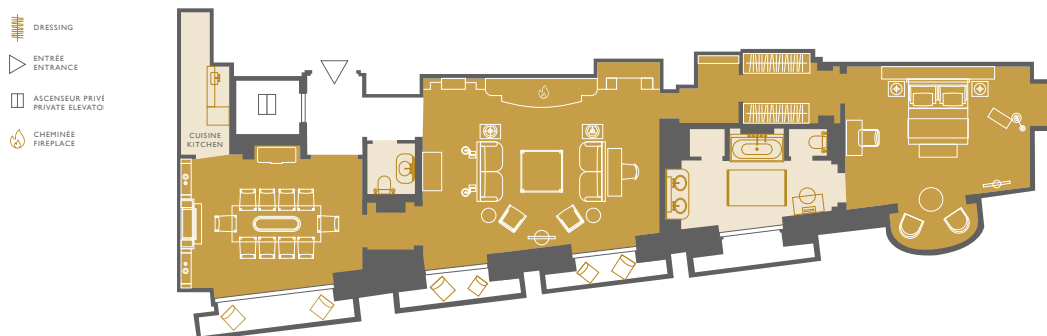
- 160m<sup>2</sup> (1722 sq.ft)
- Available in 3 bedroom-suite
- Balcony
- Fireplace
- Extra bed available on request
- Meeting boardroom
- Wifi

### COMPLIMENTARY SERVICES INCLUDED

- Breakfast for two at Le Jardinier restaurant (à la carte) or in-room
- In-room experience bar\*
- Airport transfer
- A VIP welcome amenity upon arrival
- Press Reader access

\* The experience bar includes all drinks.

\*\* We are delighted to extend a round-trip transfer from Geneva airport in a private car with chauffeur.



THE WOODWARD  
Quai Wilson 37,  
1201 Genève, Suisse

OETKER COLLECTION  
Masterpiece Hotels

CONTACT US  
reservations.twg@oetkercollection.com

oetkercollection.com  
#MasterpieceHotels





## Junior Suite

The Junior Suites offer complete comfort for 1-2 guests with a seating area, a chinoiserie embellished lacquered wood bar experience, a walk-through dressing area and an en-suite bathroom bathed in natural light.

### ROOM FEATURES

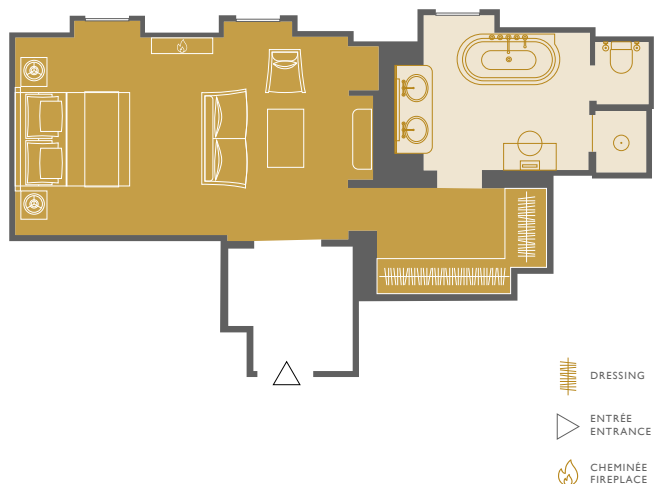
- 2 adults or 1 adult and 1 child
- 55 m<sup>2</sup> (592 sq.ft)
- Courtyard view
- Fireplace
- Connecting rooms available on request
- Accessible room
- Wifi

### COMPLIMENTARY SERVICES INCLUDED

- Breakfast for two at Le Jardinier restaurant (à la carte) or in-room
- In-room experience bar\*
- Airport transfer\*\*
- A VIP welcome amenity upon arrival
- Press Reader access

\* The experience bar includes all alcohol-free drinks.

\*\* For two nights and more , we are delighted to extend a round-trip transfer from Geneva airport in a private car with chauffeur.



THE WOODWARD  
Quai Wilson 37,  
1201 Genève, Suisse

OETKER COLLECTION  
Masterpiece Hotels

CONTACT US  
reservations.twg@oetkercollection.com

oetkercollection.com  
#MasterpieceHotels



## Deluxe Suite

The Deluxe Suites open into a beautiful foyer accented by a console table in copper leaf steel by Pouenat. The large living room features a marble fireplace, chinoiserie embellished lacquered wood bar experience and a window overlooking Place Jean-Marteau and Lake Geneva. Spacious and inviting, the bedroom is designed with handmade marquetry panelling along one wall and a marble en-suite bathroom.

### ROOM FEATURES

- 3 adults or 2 adults and 1 child
- 77 m<sup>2</sup> (828 sq.ft)
- Courtyard view
- Fireplace
- Connecting rooms available on request
- Extra bed available on request
- Wifi

### COMPLIMENTARY SERVICES INCLUDED

- Breakfast for two at Le Jardinier restaurant (à la carte) or in-room
- In-room experience bar\*
- Airport transfer\*\*
- A VIP welcome amenity upon arrival
- Press Reader access

\* The experience bar includes all drinks (except Wine and Champagne).

\*\* For two nights and more , we are delighted to extend a round-trip transfer from Geneva airport in a private car with chauffeur.



THE WOODWARD  
Quai Wilson 37,  
1201 Genève, Suisse

OETKER COLLECTION  
Masterpiece Hotels

CONTACT US  
[reservations.twg@oetkercollection.com](mailto:reservations.twg@oetkercollection.com)

[oetkercollection.com](http://oetkercollection.com)  
#MasterpieceHotels



## Executive Suite

The Executive Suites open into a small foyer leading directly to the living room featuring a marble fireplace, chinoiserie embellished lacquered wood bar experience and window overlooking Place Jean-Marteau and Lake Geneva. The adjoining bedroom, separated by handmade marquetry wood sliding doors, is designed with a large, walk-in closet and en-suite bathroom. Windows in every room offer an abundance of natural light.

### ROOM FEATURES

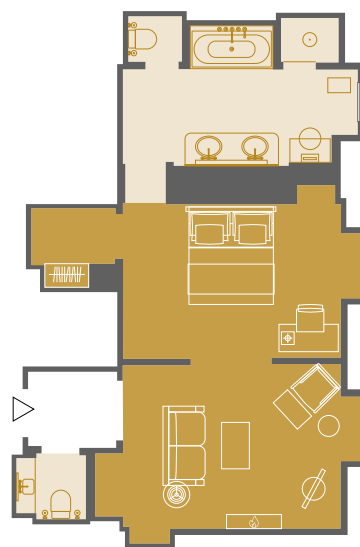
- 2 adults or 1 adult and 1 child
- 65 m<sup>2</sup> (700 sq.ft)
- Lake view
- Fireplace
- Connecting rooms available on request
- Wifi

### COMPLIMENTARY SERVICES INCLUDED

- Breakfast for two at Le Jardinier restaurant (à la carte) or in-room
- In-room experience bar\*
- Airport transfer\*\*
- A VIP welcome amenity upon arrival
- Press Reader access

\* The experience bar includes all drinks (except Wine and Champagne).

\*\* For two nights and more , we are delighted to extend a round-trip transfer from Geneva airport in a private car with chauffeur.



THE WOODWARD  
Quai Wilson 37,  
1201 Genève, Suisse

OETKER COLLECTION  
Masterpiece Hotels

CONTACT US  
[reservations.twg@oetkercollection.com](mailto:reservations.twg@oetkercollection.com)

[oetkercollection.com](http://oetkercollection.com)  
#MasterpieceHotels





## Bellevue Suite

The Bellevue Suite is the only one of its kind at The Woodward. The living room features a sloped ceiling with exposed beams, a gas fireplace and a supremely elegant bar experience. A lacquered wood hallway with two closets leads to the spacious bedroom, complete with a discrete writing desk facing the window. Each room features dormer windows overlooking the marina and Lake Geneva.

### ROOM FEATURES

- 2 adults or 1 adult and 1 child
- 80 m<sup>2</sup> (861 sq.ft)
- Lake view
- Fireplace
- Wifi

### COMPLIMENTARY SERVICES INCLUDED

- Breakfast for two at Le Jardinier restaurant (à la carte) or in-room
- In-room experience bar\*
- Airport transfer\*\*
- A VIP welcome amenity upon arrival
- Press Reader access

\* The experience bar includes all drinks (except Wine and Champagne).

\*\* For two nights and more, we are delighted to extend a round-trip transfer from Geneva airport in a private car with chauffeur.



THE WOODWARD  
Quai Wilson 37,  
1201 Genève, Suisse

OETKER COLLECTION  
Masterpiece Hotels

CONTACT US  
reservations.twg@oetkercollection.com

oetkercollection.com  
#MasterpieceHotels



## Suite Léman

The top floor Léman Suite features a large living room with a majestic domed ceiling accented by a Baccarat crystal chandelier. The spacious bedroom is designed with two lacquered wood armoires and a discrete writing desk facing the window. The bathroom offers natural light and a side view overlooking the lake and the French Alps.

### ROOM FEATURES

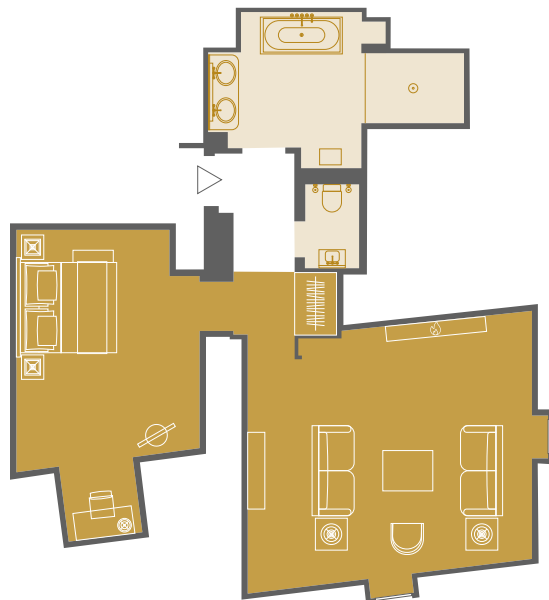
- 3 adults or 2 adults and 1 child
- 80 m<sup>2</sup> (861 sq.ft)
- Lake view
- Fireplace
- Extra bed available on request
- Wifi

### COMPLIMENTARY SERVICES INCLUDED

- Breakfast for two at Le Jardinier restaurant (à la carte) or in-room
- In-room experience bar\*
- Airport transfer\*\*
- A VIP welcome amenity upon arrival
- Press Reader access

\* The experience bar includes all drinks (except Wine and Champagne).

\*\* For two nights and more, we are delighted to extend a round-trip transfer from Geneva airport in a private car with chauffeur.



THE WOODWARD  
Quai Wilson 37,  
1201 Genève, Suisse

OETKER COLLECTION  
Masterpiece Hotels

CONTACT US  
reservations.twg@oetkercollection.com

oetkercollection.com  
#MasterpieceHotels



## Collection Suite

The Collection Suites offer a living room bathed in natural light with a marble fireplace, lacquered wood bar experience and French balcony overlooking Lake Geneva and the Alps. The adjoining bedroom is designed with handmade marquetry panelling along one wall and a separate balcony with breathtaking panoramic lake views. Accessible from the walk-in dressing room, the large bathroom includes balcony access. Ideal for a honeymoon or couple's getaway.

### ROOM FEATURES

- 2 adults or 1 adult and 1 child
- 66 m<sup>2</sup> (710 sq.ft)
- Lake view
- Balcony
- Fireplace
- Wifi

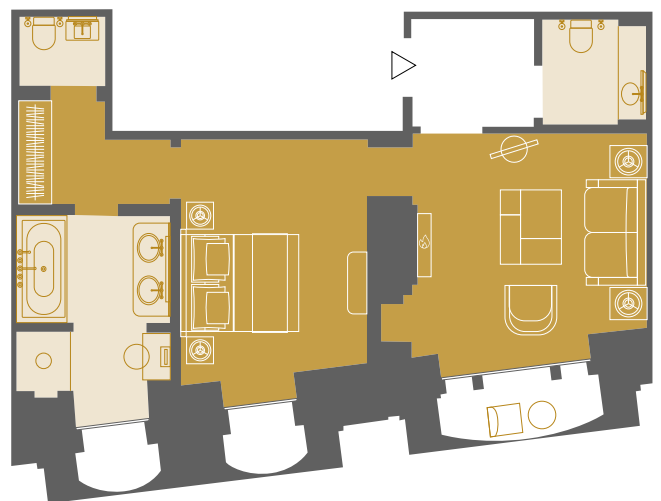


### COMPLIMENTARY SERVICES INCLUDED

- Breakfast for two at Le Jardinier restaurant (à la carte) or in-room
- In-room experience bar\*
- Airport transfer\*\*
- A VIP welcome amenity upon arrival
- Press Reader access

\* The experience bar includes all drinks (except Wine and Champagne).

\*\* For two nights and more , we are delighted to extend a round-trip transfer from Geneva airport in a private car with chauffeur.



THE WOODWARD  
Quai Wilson 37,  
1201 Genève, Suisse

OETKER COLLECTION  
Masterpiece Hotels

CONTACT US  
reservations.twg@oetkercollection.com

oetkercollection.com  
#MasterpieceHotels





*The*  
**WOODWARD**  
GENEVA

## Prestige Suite

The Prestige Suite is designed for complete discretion with private elevator access. The vestibule opens into the living room featuring a marble fireplace and a large balcony with a table and four chairs for enjoying breakfast or a drink overlooking Lake Geneva. The bedroom is designed with handmade marquetry panelling and a large, walk-in closet in lacquered wood. The en-suite bathroom is bathed in natural light. All rooms in the Prestige Suite offer views overlooking the lake and the French Alps.

### ROOM FEATURES

- 2 adults or 1 adult and 1 child
- 65 m<sup>2</sup> (700 sq.ft)
- Lake view
- Terrace
- Fireplace
- Wifi

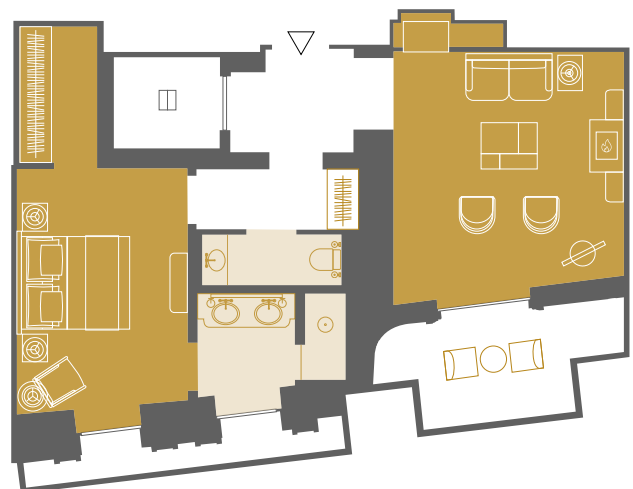


### COMPLIMENTARY SERVICES INCLUDED

- Breakfast for two at Le Jardinier restaurant (à la carte) or in-room
- In-room experience bar\*
- Airport transfer\*\*
- A VIP welcome amenity upon arrival
- Press Reader access

\* The experience bar includes all drinks (except Wine and Champagne).

\*\* For two nights and more, we are delighted to extend a round-trip transfer from Geneva airport in a private car with chauffeur.



THE WOODWARD  
Quai Wilson 37,  
1201 Genève, Suisse

OETKER COLLECTION  
Masterpiece Hotels

CONTACT US  
reservations.twg@oetkercollection.com

oetkercollection.com  
#MasterpieceHotels



## Woodward Suite

The Woodward Suite, the only one of its kind in the hotel, features a luminous living room with panoramic lake views on two sides. The walk-through dressing area in dark lacquered wood leads to a separate bathroom and the bedroom designed with handmade marquetry panelling along one wall. Both the bathroom and bedroom feature lake-facing balconies.

### ROOM FEATURES

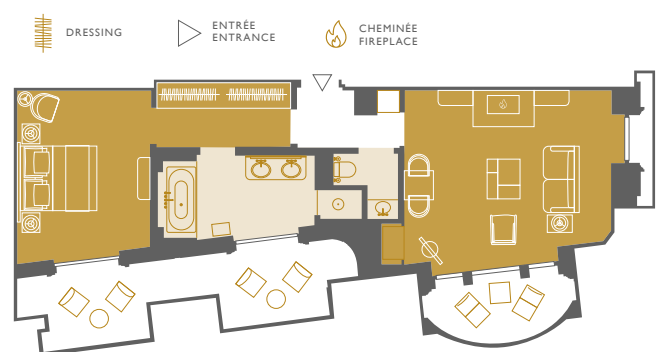
- 3 adults or 2 adults and 1 child
- 78 m<sup>2</sup> (839 sq.ft)
- Lake view
- Balcony
- Fireplace
- Connecting rooms available on request
- Extra bed available on request
- Wifi

### COMPLIMENTARY SERVICES INCLUDED

- Breakfast for two at Le Jardinier restaurant (à la carte) or in-room
- In-room experience bar\*
- Airport transfer\*\*
- A VIP welcome amenity upon arrival
- Press Reader access

\* The experience bar includes all drinks (except Wine and Champagne).

\*\* For two nights and more, we are delighted to extend a round-trip transfer from Geneva airport in a private car with chauffeur.



THE WOODWARD  
Quai Wilson 37,  
1201 Genève, Suisse

OETKER COLLECTION  
Masterpiece Hotels

CONTACT US  
reservations.twg@oetkercollection.com

oetkercollection.com  
#MasterpieceHotels



*The*  
**WOODWARD**  
GENEVA

## Suite Mont Blanc

Designed for absolute comfort and versatility, the Mont Blanc Suites feature a large living room with a marble fireplace, a writing desk and a round dining table for four. The bedroom is accessed by a long, walk-through dressing area in dark lacquered wood. Both the bedroom and en-suite bathroom feature balconies facing Lake Geneva and the French Alps.

### ROOM FEATURES

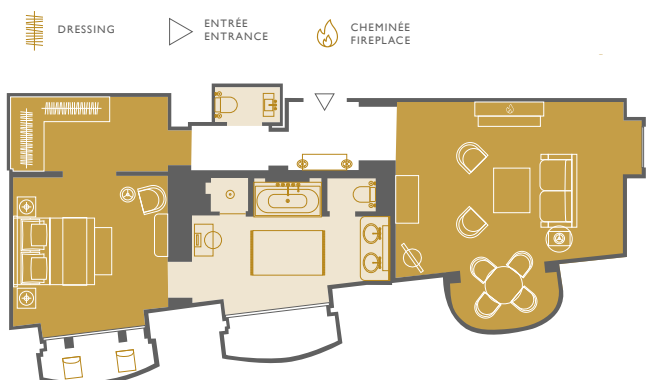
- 2 adults or 1 adult and 1 child
- 93 m<sup>2</sup> (1001 sq.ft)
- Lake view
- Balcony
- Fireplace
- Connecting rooms available on request
- Wifi

### COMPLIMENTARY SERVICES INCLUDED

- Breakfast for two at Le Jardinier restaurant (à la carte) or in-room
- In-room experience bar\*
- Airport transfer\*\*
- A VIP welcome amenity upon arrival
- Press Reader access

\* The experience bar includes all drinks (except Wine and Champagne).

\*\* For two nights and more, we are delighted to extend a round-trip transfer from Geneva airport in a private car with chauffeur.



THE WOODWARD  
Quai Wilson 37,  
1201 Genève, Suisse

OETKER COLLECTION  
Masterpiece Hotels

CONTACT US  
reservations.twg@oetkercollection.com

oetkercollection.com  
#MasterpieceHotels





## Presidential Suite

The Presidential Suite is designed for absolute comfort and total privacy. The expansive living room features a large wraparound sofa and twin chairs for relaxing by the fire. Separated by French doors is a dining room with a long table and space for up to 10. A side-facing loggia extends the entire length of the living room and dining room with beautiful views over the marina and Lake Geneva. The bedroom is separated from the living spaces by a long hallway and walk-through dressing room and is designed with royal blue tapestries by Rubelli and Lelièvre. The immense, light-filled bathroom is the largest in the hotel. The Presidential Suite is ideal for heads of state and political delegations and can be adjoined with the Woodward Suite. Both the living room and dining room can be privatised for special events.

### ROOM FEATURES

- 140m<sup>2</sup> (2346 sq.ft)
- Available in 2 bedroom-suite
- Lake view
- Terrace
- Fireplace
- Connecting rooms available on request
- Meeting boardroom
- Wifi

### COMPLIMENTARY SERVICES INCLUDED

- Breakfast for two at Le Jardinier restaurant (à la carte) or in-room
  - In-room experience bar\*
  - Airport transfer
  - A VIP welcome amenity upon arrival
  - Press Reader access
- \* The experience bar includes all drinks.
- \*\* We are delighted to extend a round-trip transfer from Geneva airport in a private car with chauffeur.



THE WOODWARD  
Quai Wilson 37,  
1201 Genève, Suisse

OETKER COLLECTION  
Masterpiece Hotels

CONTACT US  
reservations.twg@oetkercollection.com

oetkercollection.com  
#MasterpieceHotels



## Royale Suite

The largest in the hotel, the Royal Suite can be accessed directly by a private elevator. A large private dining room features seating for up to 10, a marble fireplace and two balconies overlooking Lake Geneva and the French Alps. The expansive living room offers two additional lake-facing balconies, a fireplace, generous seating and a Baccarat crystal chandelier. Just off the living room is a kitchenette that includes a separate entry. The bedroom is reached through a long, walk-through dressing area and is designed with a writing desk by Nicolas Aubagnac, handmade marquetry wood panelling and an immense marble en-suite bathroom. The Royal Suite can be adjoined with the Executive Suite and Deluxe Suite.

### ROOM FEATURES

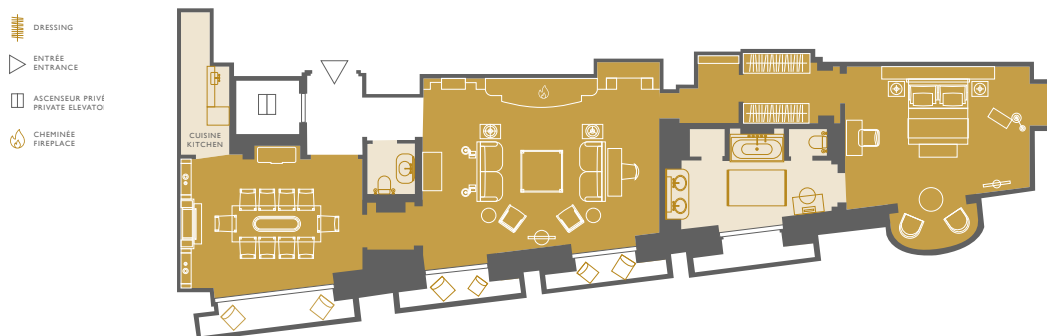
- 160m<sup>2</sup> (1722 sq.ft)
- Available in 3 bedroom-suite
- Balcony
- Fireplace
- Extra bed available on request
- Meeting boardroom
- Wifi

### COMPLIMENTARY SERVICES INCLUDED

- Breakfast for two at Le Jardinier restaurant (à la carte) or in-room
- In-room experience bar\*
- Airport transfer
- A VIP welcome amenity upon arrival
- Press Reader access

\* The experience bar includes all drinks.

\*\* We are delighted to extend a round-trip transfer from Geneva airport in a private car with chauffeur.



THE WOODWARD  
Quai Wilson 37,  
1201 Genève, Suisse

OETKER COLLECTION  
Masterpiece Hotels

CONTACT US  
reservations.twg@oetkercollection.com

oetkercollection.com  
#MasterpieceHotels